

SMS Center

MySMS

User Manual

Version 1.0.0.0

Yeastar Technology Co., Ltd.

Table of Contents

1 Introduction	3
2 Installing MySMS Software	4
3 Managing MySMS	9
3.1 Accessing MySMS	9
3.2 Multi-User Accounts	10
3.3 Managing MySMS	10
3.3.1 Manager Login	10
3.3.2 Device Manage	10
3.3.3 User Manage	13
3.3.4 System Logs	15
3.3.5 Password Settings	16
4 Using MySMS	17
4.1 User Login	17
4.2 SIM Card Status	17
4.3 Contacts Management	18
4.3.1 Contact List	18
4.3.2 Contact Group	20
4.4 Send SMS	22
4.4.1 Send Personalized SMS	22
4.4.2 Send Fixed SMS	25
4.4.3 Send Scheduled SMS	28
4.4.4 Send Template SMS	31
4.5 Outbox	34
4.6 Inbox	35
4.7 System Logs	36
4.8 Password Settings	36

1 Introduction

The potential of interacting people with SMS is huge. Positioned to respond to this trend, MySMS enables users of NeoGate TG VoIP GSM Gateway to send SMS on the free Web messaging platform. Without any complex integration, any Web browser could be exploited to take advantage of Web SMS sending and receiving. Secure, reliable, and fast SMS delivery ensures enterprises have the best SMS solution.

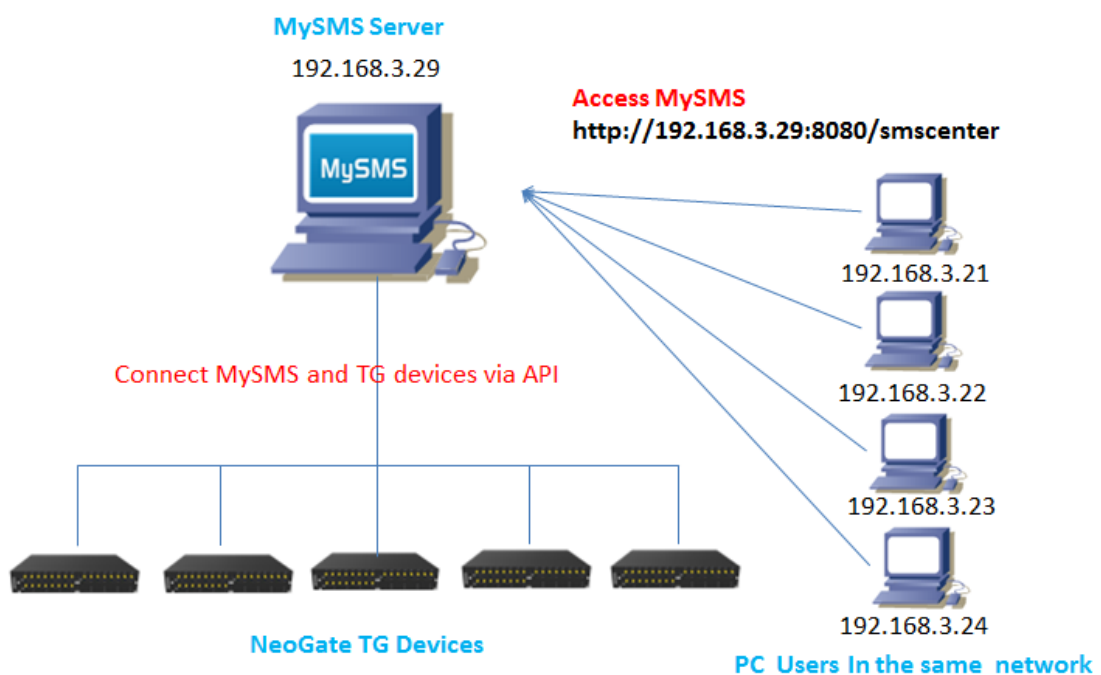


Figure 1-1 MySMS Application

Features

- 2-way SMS
- Inbox & Outbox
- Bulk SMS
- Scheduled SMS sending
- SMS Delivery Result
- SMS Template
- Custom SMS
- Fixed SMS
- Contact Management
- SIM Card Status
- Admin and User Account
- System Logs

2 Installing MySMS Software

MySMS is built on Tomcat and MySQL. The port used for Tomcat is 8080 and 3306 for MySQL. Please check if these two ports are used for other procedures before installing MySMS. If the ports are already being used, please close the related programs and then start to install MySMS.

It is easy to get start with MySMS. All you need to do is downloading MySMS software to one computer and access MySMS using a browser. Before installing the software, please make sure that your computer meets the following requirements.

Operating System: Windows XP, Windows 7, Windows 8

Disk Space: 400MB of free space is required

Web Browser: Firefox, Chrome, IE (Version 9 or higher)

Follow these step-by-step instructions to install MySMS

Step1. Go to Yeastar website to download MySMS installation file.

Click the link to download:

<http://www.yeastar.com/download/MySMS/setup.exe>

Step2. Save MySMS installation file and double click it to install MySMS on your computer.

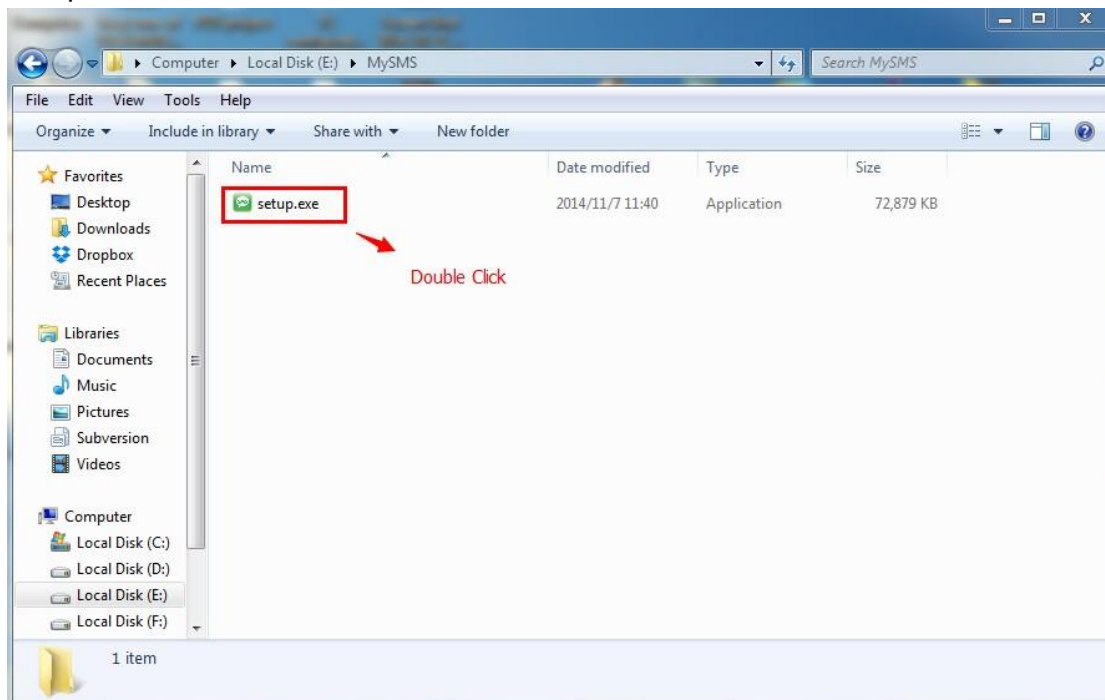


Figure 2-1 Install MySMS

Step3. Select the language, and click **OK**.

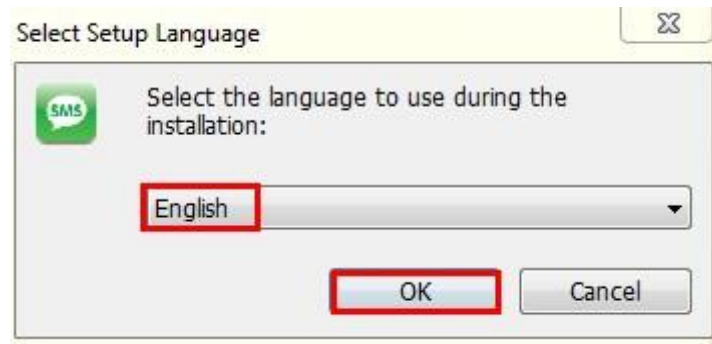


Figure 2-2 Select the Language

Step4. Click **Next** to continue to install MySMS.

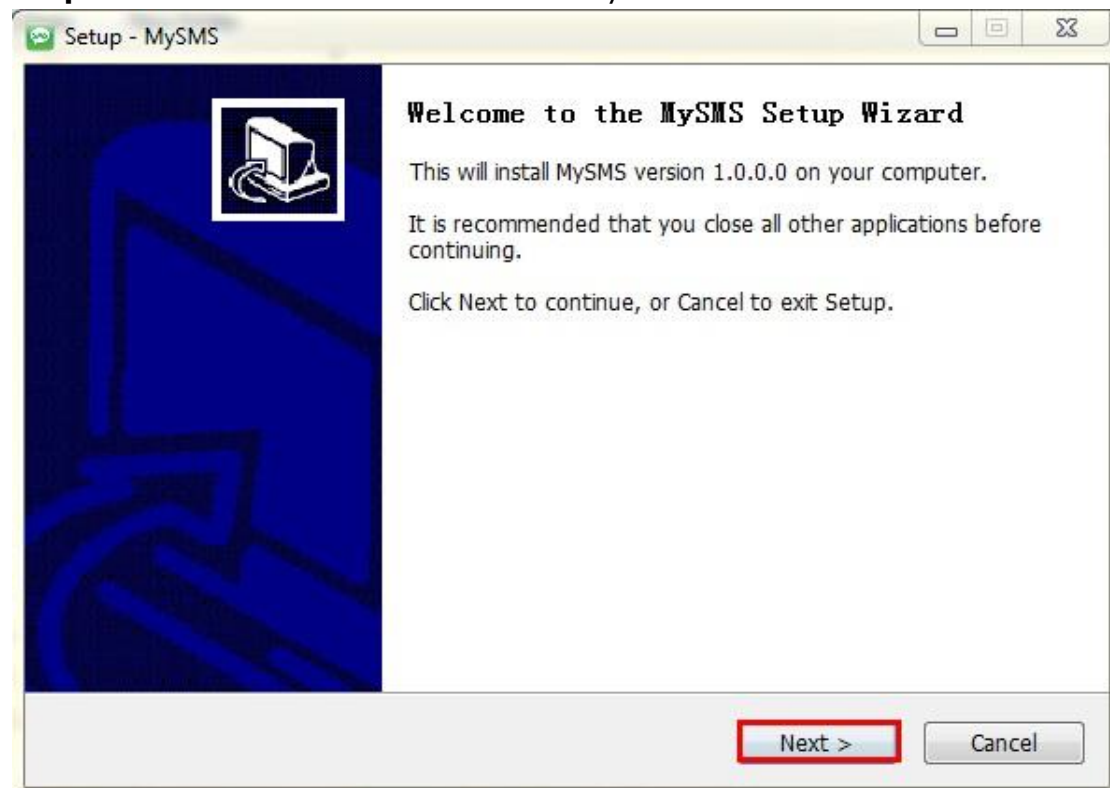


Figure 2-3 MyPBX Setup Wizard

Step5. Select the destination where you want to install MySMS, then click **Next**.

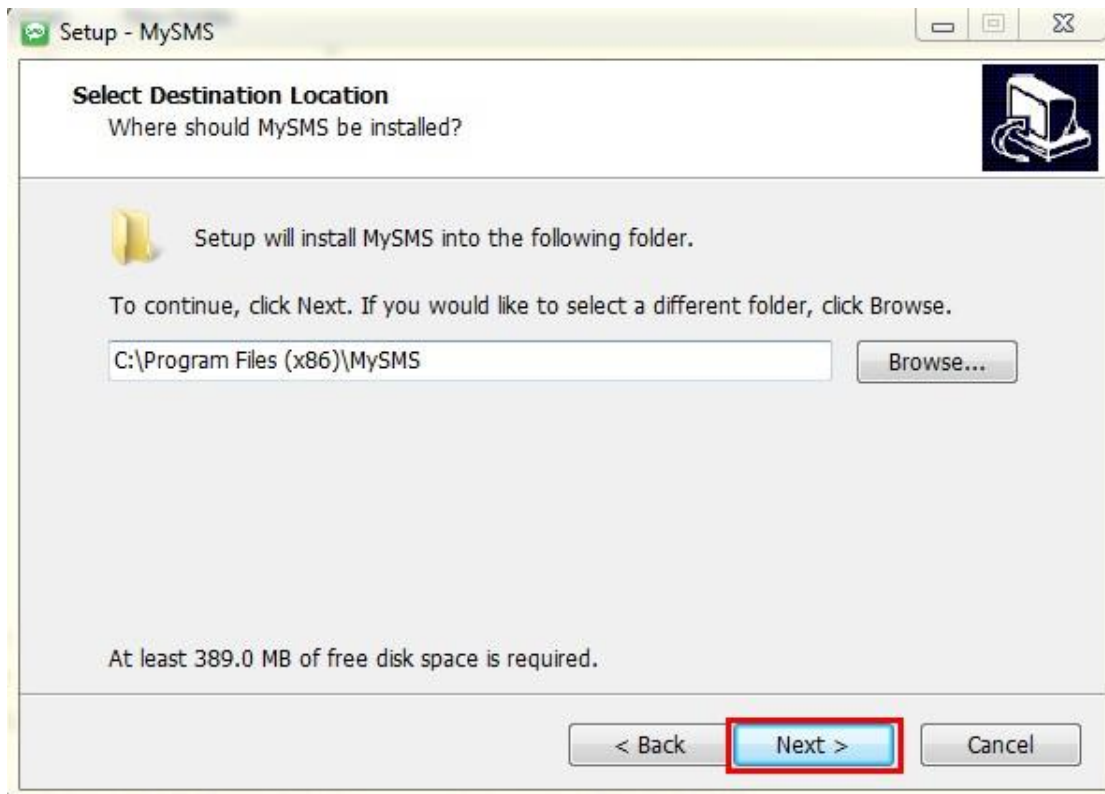


Figure 2-4 Select Destination Location

Step6. Select Start Menu Folder, then click **Next**.

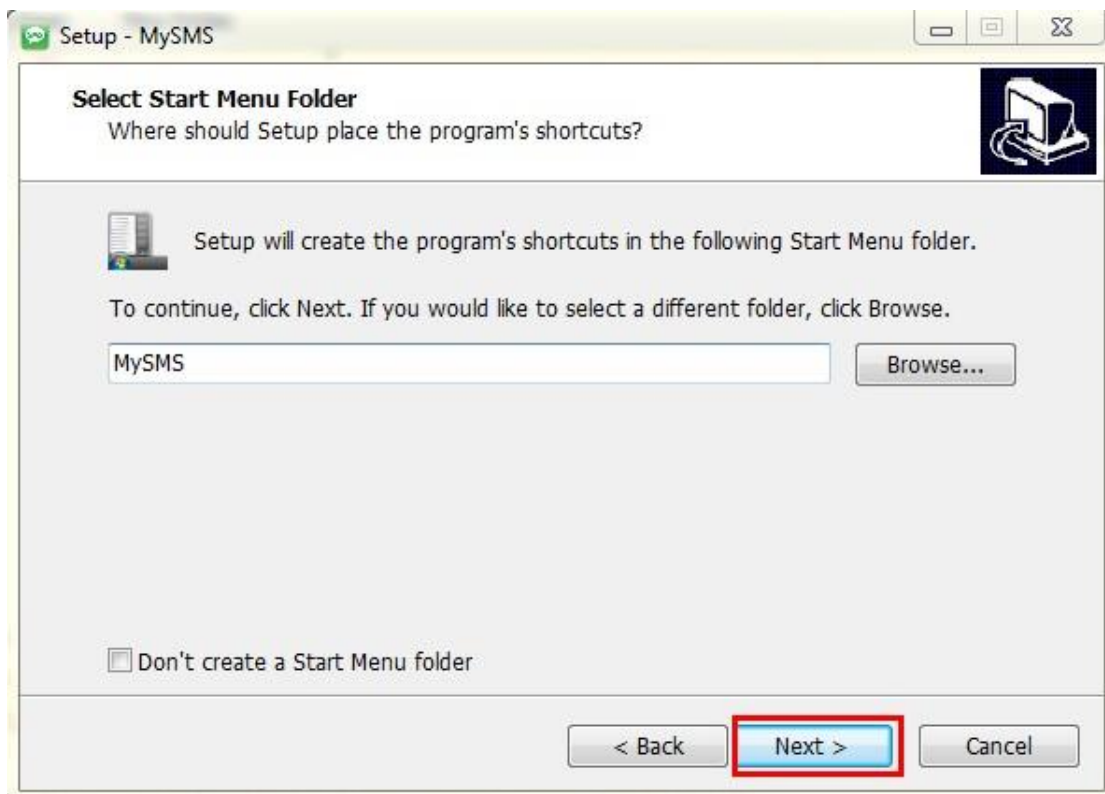


Figure 2-5 Select Start Menu Folder

Step7. Select Additional Tasks, then click **Next**.

If you don't want to create a Quick Launch icon, uncheck the **Create a Quick Launch icon** box before you click **Next**.

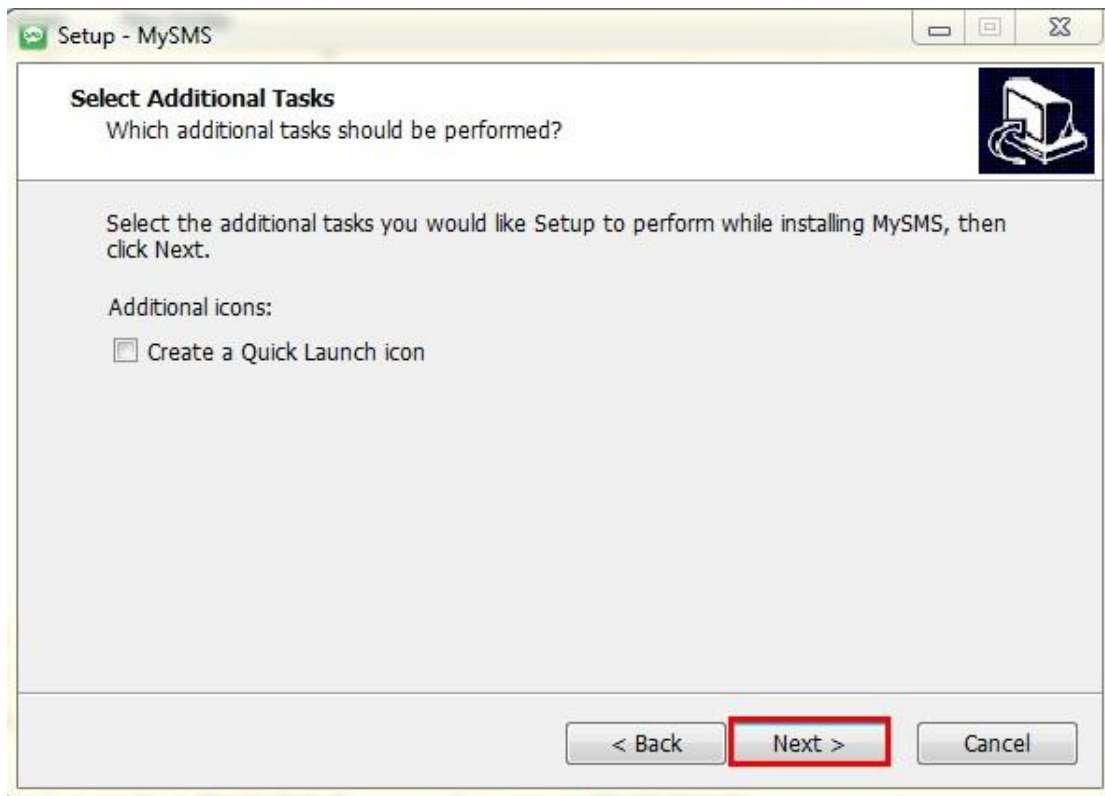


Figure 2-6 Select Additional Tasks

Step8. Click **Install** to continue with the installation.

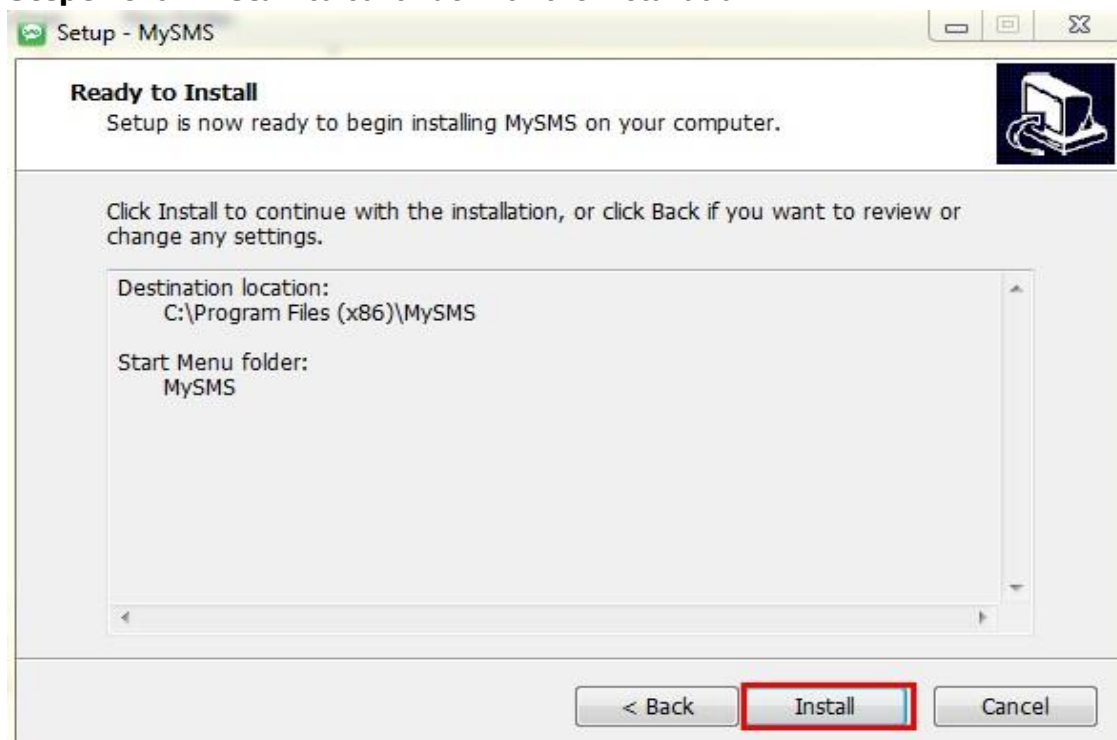


Figure 2-7 Ready to Install

Step9. Please wait while Setup installs MySMS on your computer.

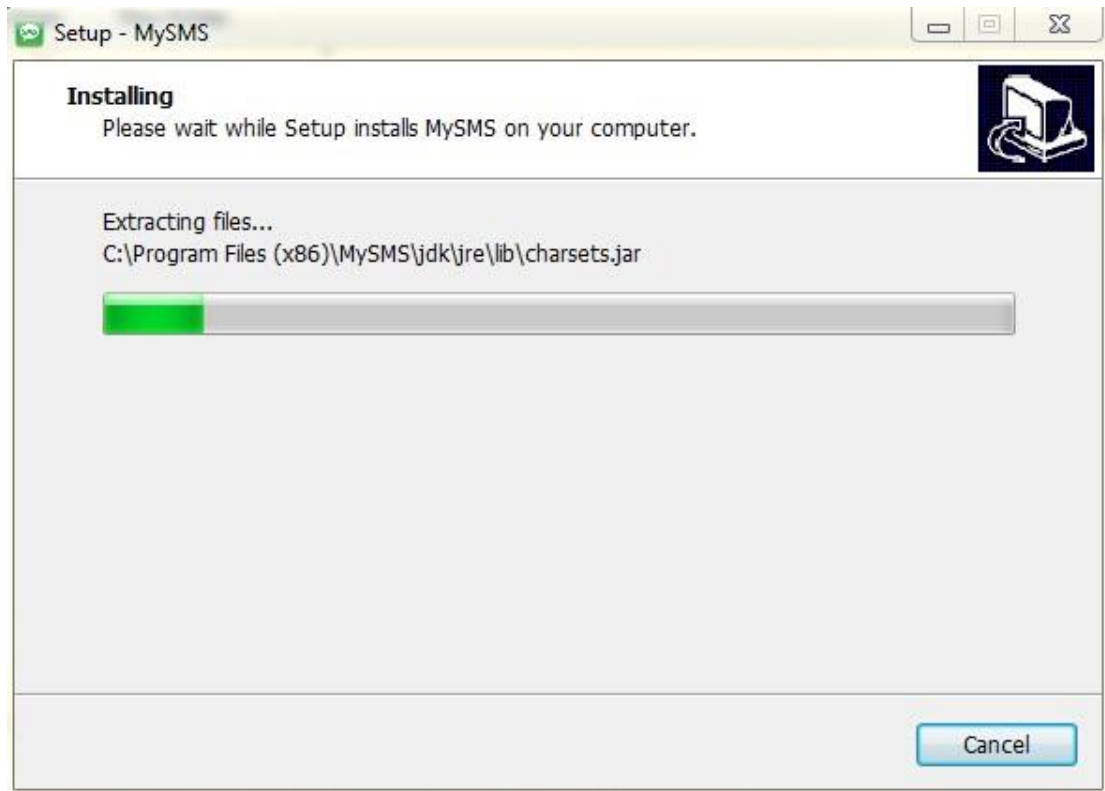


Figure 2-8 Installing

Step10. The installation is done. Click **Finish** to exit Setup.

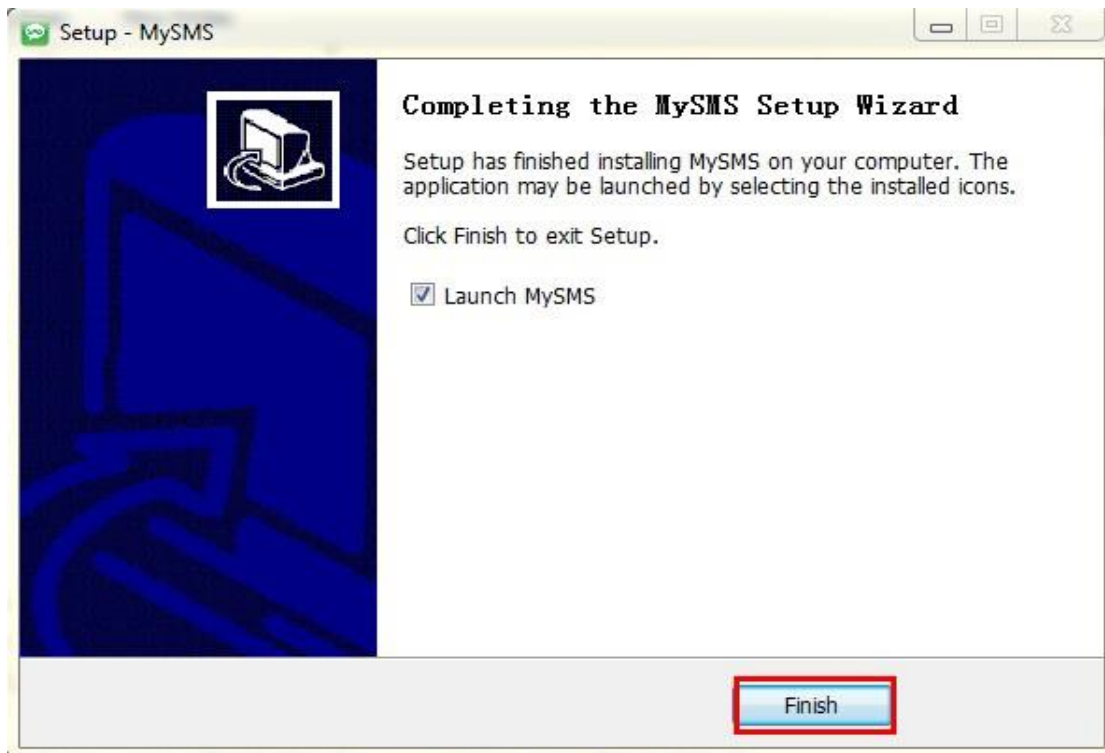


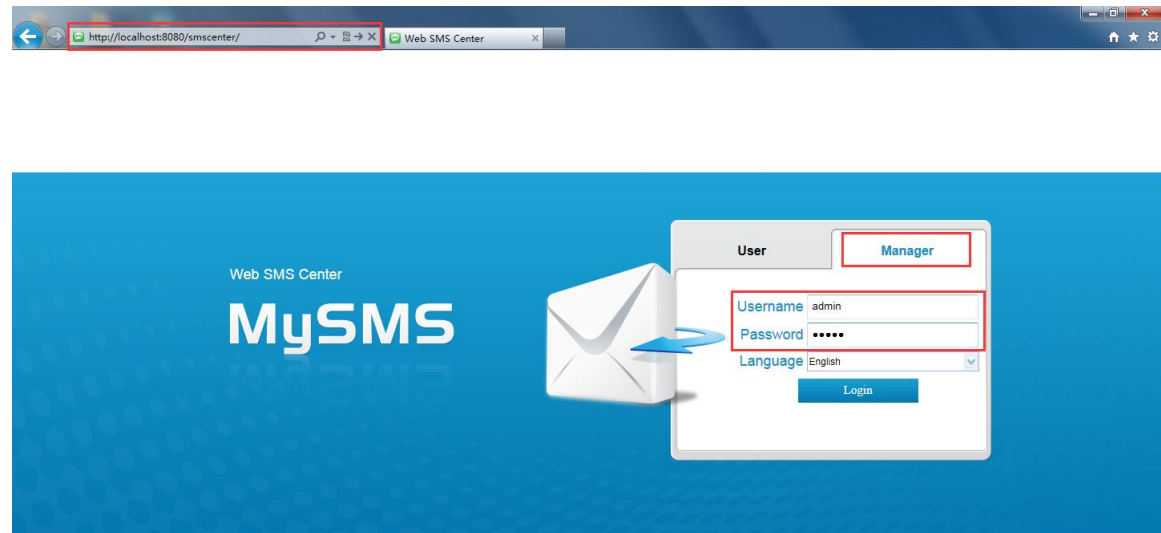
Figure 2-9 Finish

3 Managing MySMS

3.1 Accessing MySMS

Once the installation is done, MySMS will automatically start on the local server, bringing you to the MySMS local website using the default web browser.

The MySMS local host is <http://localhost:8080/smscenter>.



Copyright © 2006-2014 Yeostar Technology Co., Ltd. All Rights Reserved.

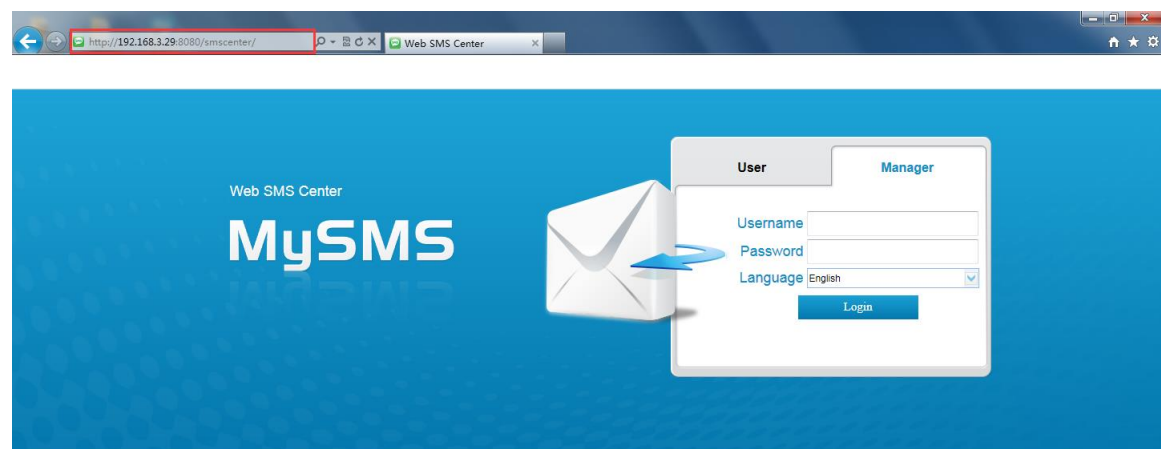
Figure 3-1 MySMS Local Host

You can use another MySMS URL to access MySMS:

<http://the local server IP address:8080/smscenter>

In this guide, the local IP address is 192.168.3.29, so you need to point the browser to the URL: <http://192.168.3.29:8080/smscenter>.

This URL can be applied to other computers in the same local network to access MySMS.



Copyright © 2006-2014 Yeostar Technology Co., Ltd. All Rights Reserved.

Figure 3-2 MySMS URL

Note:

You **MUST** keep the PC (where MySMS software is installed) running, or you cannot access MySMS.

3.2 Multi-User Accounts

As you can see on the MySMS logon page, there are two user types.

- **User** allows a user to send SMS messages and check the received SMS messages with a selected NeoGate TG device.
- **Manager** allows the administrator to manage the integration between MySMS and NeoGate TG devices, manage user sub-accounts and view system logs.

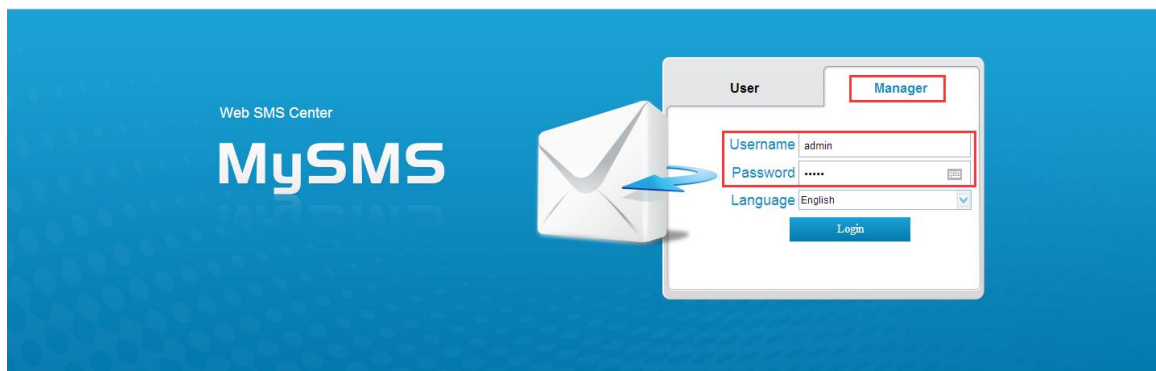
3.3 Managing MySMS

3.3.1 Manager Login

To use MySMS, you should first log in MySMS Manager Account to manage devices and users.

Username: admin

Password: admin (default)



Copyright © 2006-2014 Yeostar Technology Co., Ltd. All Rights Reserved.

Figure 3-3 Manager Login

3.3.2 Device Manage

On this page, you can add devices to connect with MySMS software via API. In this guide, we show you how to integrate one NeoGate TG1600 device to MySMS.

NeoGate TG1600 IP address: 192.168.3.184.

Important:

Before connecting NeoGate TG1600 device to MySMS, please make sure that the API Settings on NeoGate TG1600 Web Interface are configured correctly.

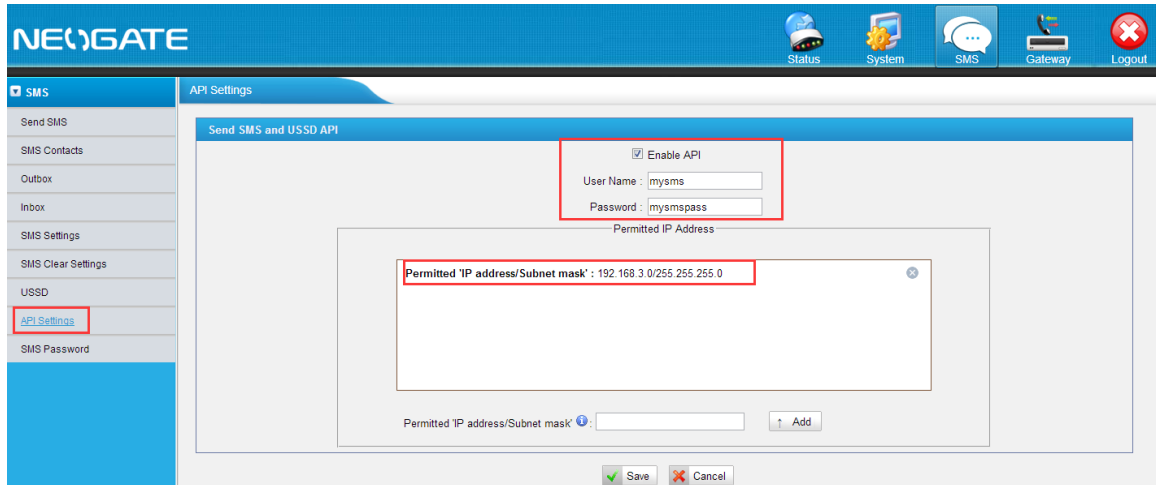



Figure 3-4 NeoGate TG API Settings

Enable API: Checked //Enable API, the default API port is 5038
User Name: mysms // Enter the user name according to your preference
Password: mysmpass //Enter the password according to your preference
Permitted 'IP address/Subnet mask': 192.168.3.0/255.255.255.0
 // Only the input IP address range can connect this device via API

Add Device

1. Click the button  to connect one device to MySMS.
2. In the popup window, fill in the details of NeoGate TG1600.

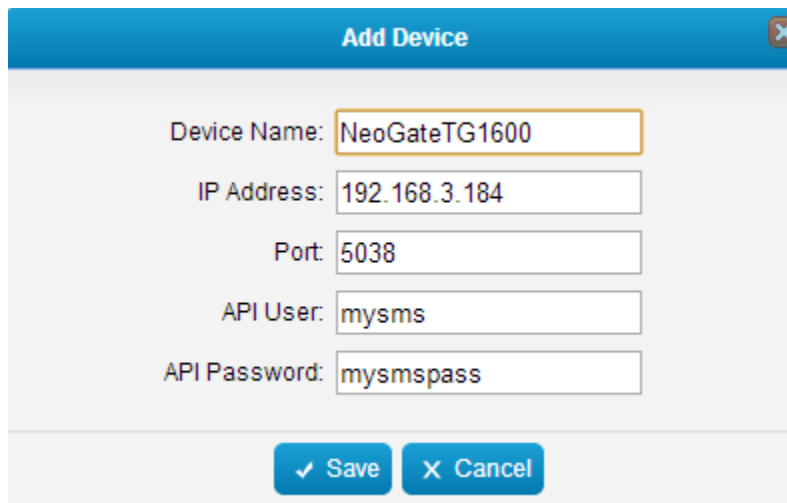
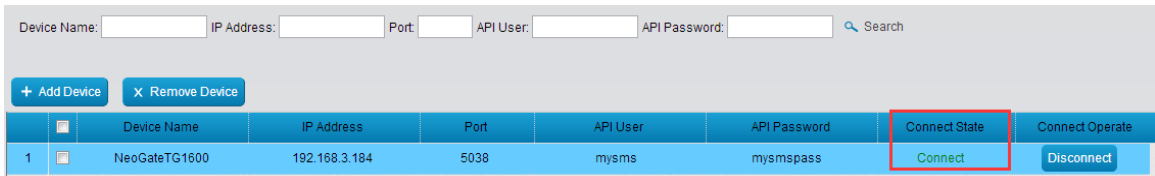


Figure 3-5 Add Device

Device Name: NeoGateTG1600 //Give a name for the device which you want to connect with MySMS
IP Address: 192.168.3.184 //The IP address of the NeoGate TG1600
Port: 5038 //The API port, the default is 5038
API User: mysms // The User Name set on NeoGate TG1600 API Settings page
API Password: mysmpass //The password set on NeoGate TG1600 API Settings page

- Click the button  and check the Connect state.



	Device Name	IP Address	Port	API User	API Password	Connect State	Connect Operate
1	NeoGateTG1600	192.168.3.184	5038	mysms	mysmpass	Connect	Disconnect


Figure 3-6 Device Status

Connect State

Connect: the device and MySMS are connected successfully.

Disconnect: the device is not connected to MySMS.

Remove Device

- Select devices, and click the button  to remove the devices from MySMS.
- Click **OK** to remove devices; click **Cancel** to keep the devices.

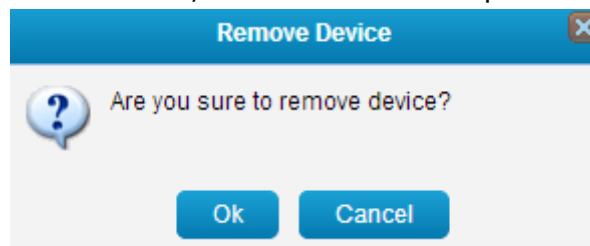
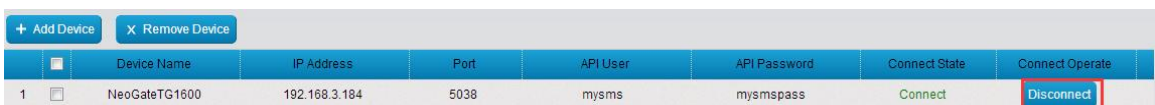


Figure 3-7 Remove Device

Connect / Disconnect

- Click  to disconnect TG1600 and MySMS.



	Device Name	IP Address	Port	API User	API Password	Connect State	Connect Operate
1	NeoGateTG1600	192.168.3.184	5038	mysms	mysmpass	Connect	Disconnect

Figure 3-8 Disconnect Device

- Click  to connect TG1600 and MySMS.

+ Add Device		X Remove Device							
	Device Name	IP Address	Port	API User	API Password	Connect State	Connect Operate		
1	NeoGateTG1600	192.168.3.184	5038	mysms	mysmypass	Disconnect	Connect		

Figure 3-9 Connect Device

Search Device

If there are many devices added on MySMS, you can find the desired device quickly with the search function on MySMS.

The device can be searched by "Device Name", "IP Address", "Port", "API User", and "API Password".

Device Name:	<input type="text"/>	IP Address:	<input type="text"/>	Port:	<input type="text"/>	API User:	<input type="text"/>	API Password:	<input type="text"/>	<input type="button" value="Search"/>
--------------	----------------------	-------------	----------------------	-------	----------------------	-----------	----------------------	---------------	----------------------	---------------------------------------

Figure 3-10 Search Device

3.3.3 User Manage

Add User

1. Click **+ Add User** to add one user.
2. Set the User Name and password.

Add User
✕

Username:

Password:

Figure 3-11 Add User

3. Click **Save** to save the settings, then you will see the password is protected as it cannot be seen after created.

		Username	Password	Created Time	User Authority
1	<input type="checkbox"/>	Catherine	b5a92f01f4ea95bba543e3053b17fdab	2014-11-07 21:22:58	<input type="button" value="⚙"/>

Figure 3-12 User Status

User Authority

A user can use MySMS with multiple NeoGate TG devices if the devices are added on MySMS.

1. Click  to configure the user authority.

		Username	Password	Created Time	User Authority
1	<input type="checkbox"/>	Catherine	b5a92f01f4ea95bba543e3053b17fdab	2014-11-07 21:22:58	<input type="button" value="⚙"/>
2	<input type="checkbox"/>	Ada	7a6c874f39b4241f8e7c91fd2559b3ff	2014-11-07 21:33:21	<input type="button" value="⚙"/>

Figure 3-13 Edit User

2. Choose which devices can be used by the user, then click **Save**.

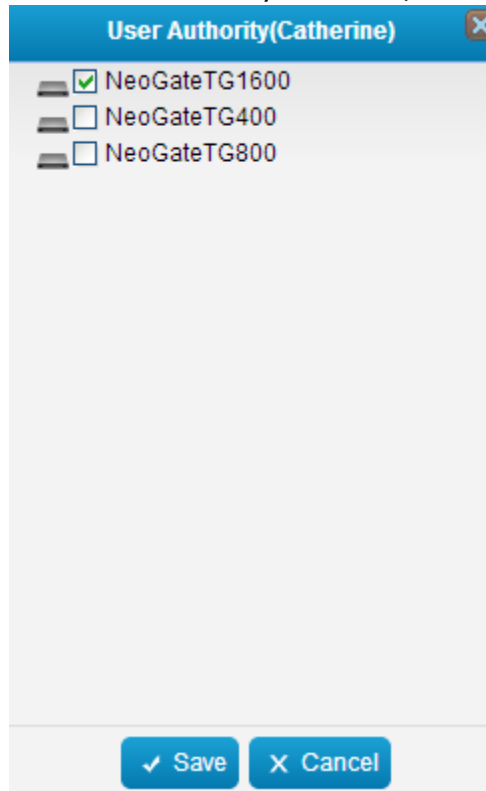



Figure 3-14 User Authority

Remove User

1. Select the desired users, and click the button  to remove the users from MySMS.
2. Click **OK** to remove the users; click **Cancel** to keep the users.

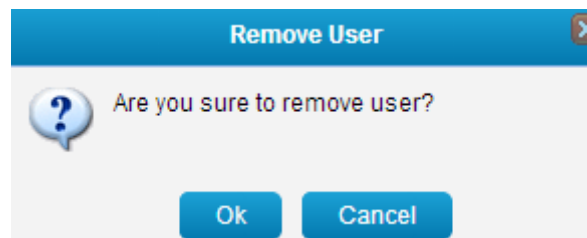



Figure 3-15 Remove User

Initial Password

If the password for a user is forgotten, it can be reset to "123456".

1. Select the user, and click  to reset the password.
2. The system will ask if you are sure that you want to use the initial password.

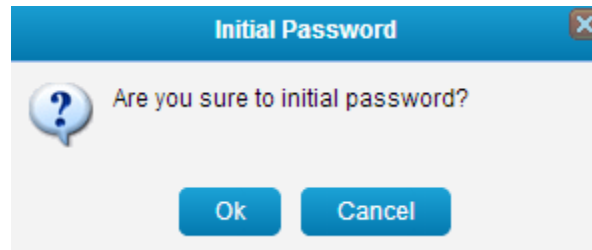


Figure 3-16 Initial Password

3. Click **OK** to use the initial password "123456".

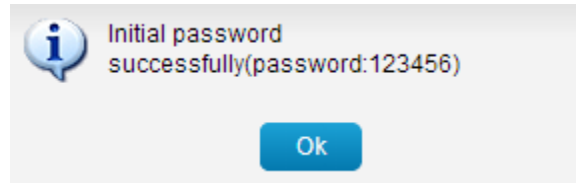


Figure 3-17 Initial Password Successfully

4. Click **Cancel** to keep the old password.

Search Users

If there are many users added on MySMS, you can find the desired user quickly with the search function on MySMS.

The user can be searched by "Username" and "Created Time".

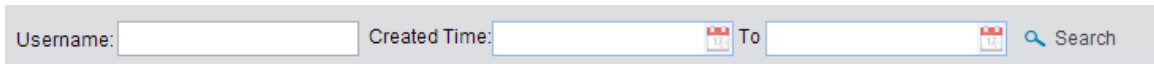


 A search form with two input fields: "Username:" and "Created Time:". The "Created Time:" field has a calendar icon and a "To" label. There is a "Search" button with a magnifying glass icon.

Figure 3-18 Search Users

3.3.4 System Logs

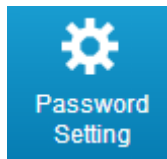
The system logs can be viewed and searched by the administrator on this page.

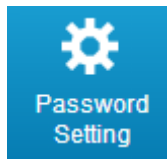

 A table showing system logs with columns for Log Type, Time, IP Address, and User. The table contains 12 rows of log entries.

	Log Type	Time	IP Address	User
1	Modify Authority	2014-11-07 22:03:16	127.0.0.1	admin
2	Add Device	2014-11-07 21:56:24	127.0.0.1	admin
3	Add Device	2014-11-07 21:55:51	127.0.0.1	admin
4	Login	2014-11-07 21:55:32	127.0.0.1	admin
5	Add User	2014-11-07 21:33:21	127.0.0.1	admin
6	Add User	2014-11-07 21:22:58	127.0.0.1	admin
7	Login	2014-11-07 21:01:17	127.0.0.1	admin
8	Edit Device	2014-11-07 20:23:48	127.0.0.1	admin
9	Add Device	2014-11-07 20:22:48	127.0.0.1	admin
10	Login	2014-11-07 20:22:24	127.0.0.1	admin
11	Login	2014-11-07 16:31:00	192.168.10.42	admin
12	Login	2014-11-07 16:12:42	192.168.10.42	admin

Figure 3-19 System Logs

3.3.5 Password Settings



Click  to change the password of admin account.

Enter the old password and set a new password, click **Save**, then log in admin account using new password.

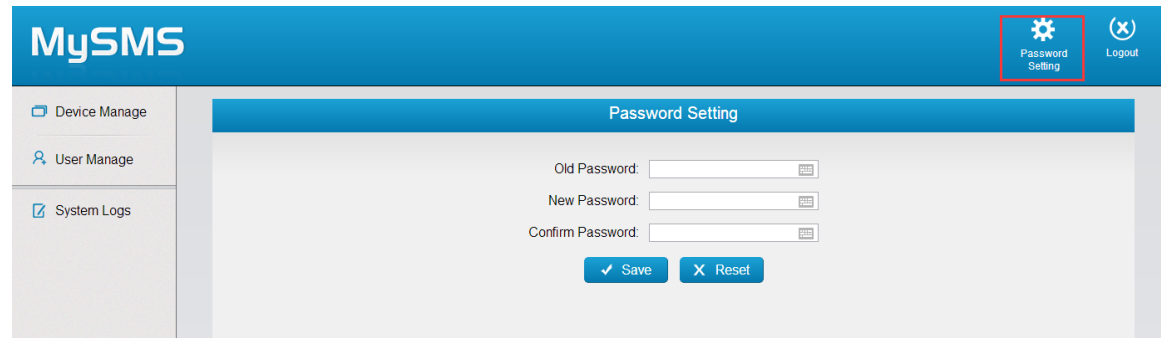
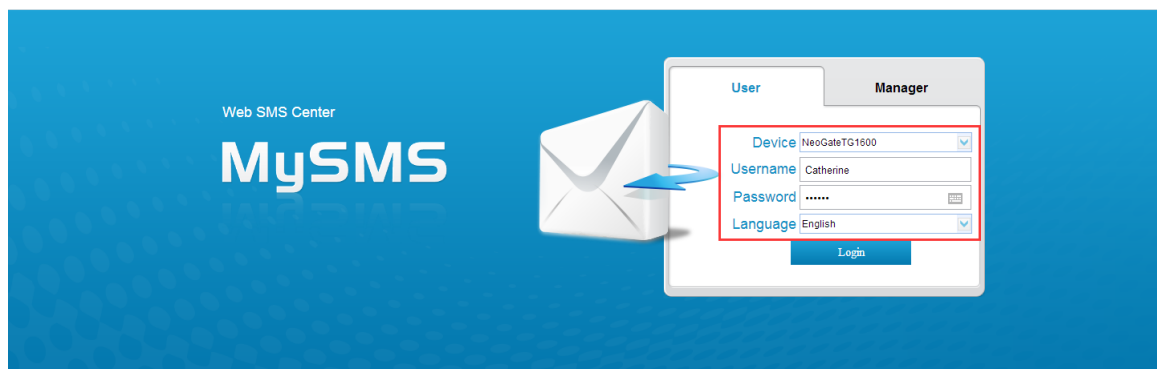


Figure 3-20 Password Settings

4 Using MySMS

4.1 User Login

To use MySMS, you need to log in MySMS with the user account, which is created by the admin account. Here we use the account "Catherine", which was created in the [Chapter 3.3.2 User Manage](#).



Copyright © 2006-2014 Yeastar Technology Co., Ltd. All Rights Reserved.

Figure 4-1 User Login

Device: Select the device "NeoGateTG1600", which is authorized to user "Catherine"

Username: Catherine

Password: catherine1600

After login, you can use MySMS to send SMS messages through the NeoGate TG1600 and check the received SMS messages on MySMS.

4.2 SIM Card Status

Before using MySMS to send and receive SMS messages, you need to check which SIM cards are available. You can view the status for all the SIM cards which are installed on NeoGate TG device. Click the **SIM Card Status** option on the left-hand navigation bar, you can see all the SIM cards' status listed on the page.



The screenshot shows the MySMS interface with a sidebar on the left containing navigation options: Inbox, Send SMS, Outbox, SMS Template, Fixed SMS, Contact List, Contact Group, SIM Card Status (highlighted), and System Logs. The main content area displays a table of SIM card statuses for 16 ports.

Port	State	Carrier	Signal
1	Ready	CHINA MOBILE	📶
2	Ready	CHINA MOBILE	📶
3	Ready	CHINA MOBILE	📶
4	Ready	CHINA MOBILE	📶
5	Ready	CHINA MOBILE	📶
6	Ready	CHINA MOBILE	📶
7	Failed		Please Insert SIM Card
8	Failed		Please Insert SIM Card
9	Failed		Please Insert SIM Card
10	Failed		Please Insert SIM Card
11	Failed		Please Insert SIM Card
12	Failed		Please Insert SIM Card
13	Detecting SIM...		📶
14	Ready	CHINA MOBILE	📶
15	Detecting SIM...		📶
16	Failed		📶

Figure 4-2 SIM Card Status

State	Description
Ready	The SIM card is idle
Failed	There is no SIM card inserted
Busy	The SIM card is being used

Signal	Description
📶	No signal
📶	Poor
📶	Average
📶	Good
📶	Excellent

4.3 Contacts Management

A contact list allows you to target and text contacts with common interests. Once you have all your contacts created on MySMS, you can send SMS messages to a single contact or a group or all contacts by directly selecting rather than typing in the numbers manually each time.

4.3.1 Contact List

Click the **Contact List** option on the left-hand navigation bar, you can manage the contacts on the page.

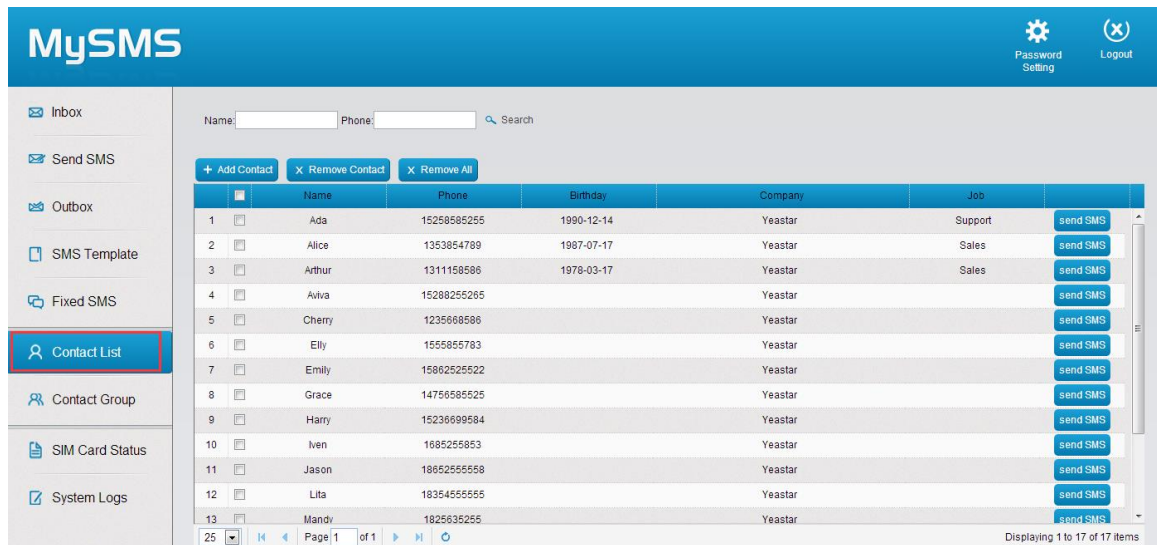


Figure 4-3 Contacts List

Add Contact

1. Click **Add Contact** button to create an individual contact.
2. Enter the name, phone number and other information in the pop-up window.

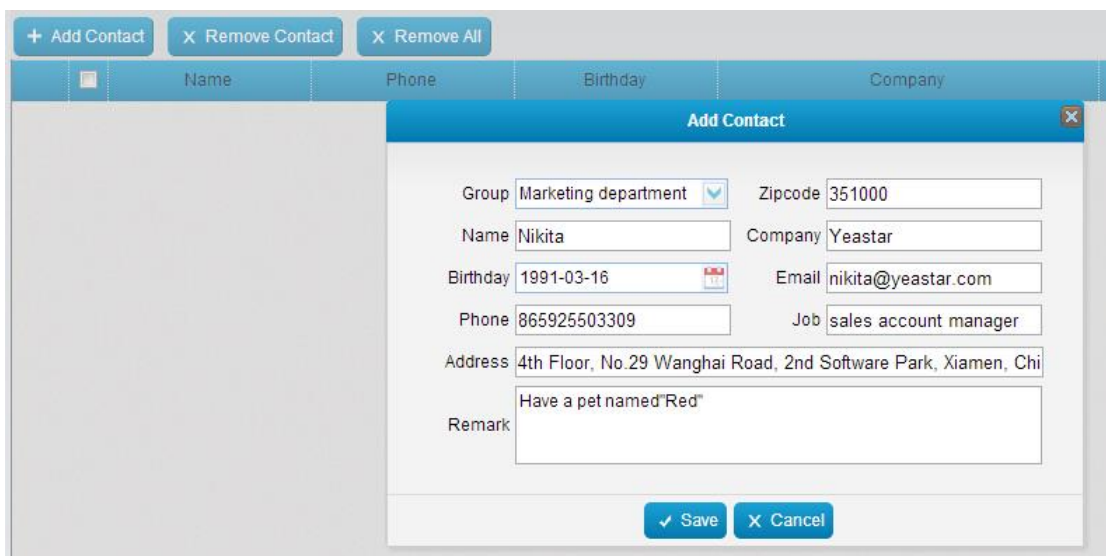


Figure 4-4 Add Contact

***The Name and Phone fields are required.**

3. Click **Save**, then the contact is successfully created.

Remove Contact

1. Select the desired contacts and then click **Remove Contact**.
2. Click **OK** to remove the contacts.
3. Click **Cancel** to keep the contacts.

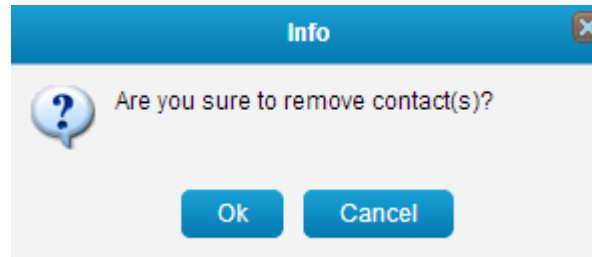


Figure 4-5 Remove Contacts

Remove All

1. Click **Remove All**.
2. Click **Ok** to clear the contact list.
3. Click **Cancel** to keep all the contacts.

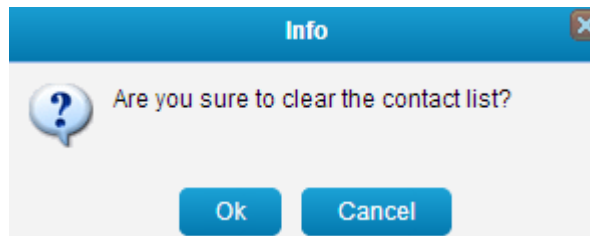


Figure 4-6 Remove All

Search Contact

You can search the contact by "Name" and "Phone".

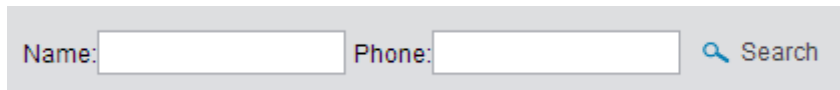


Figure 4-7 Search Contact

4.3.2 Contact Group

Contacts created in the Contact List can be divided into groups. It makes sending SMS messages to multiple contacts more efficiently by focusing on one group at a time.

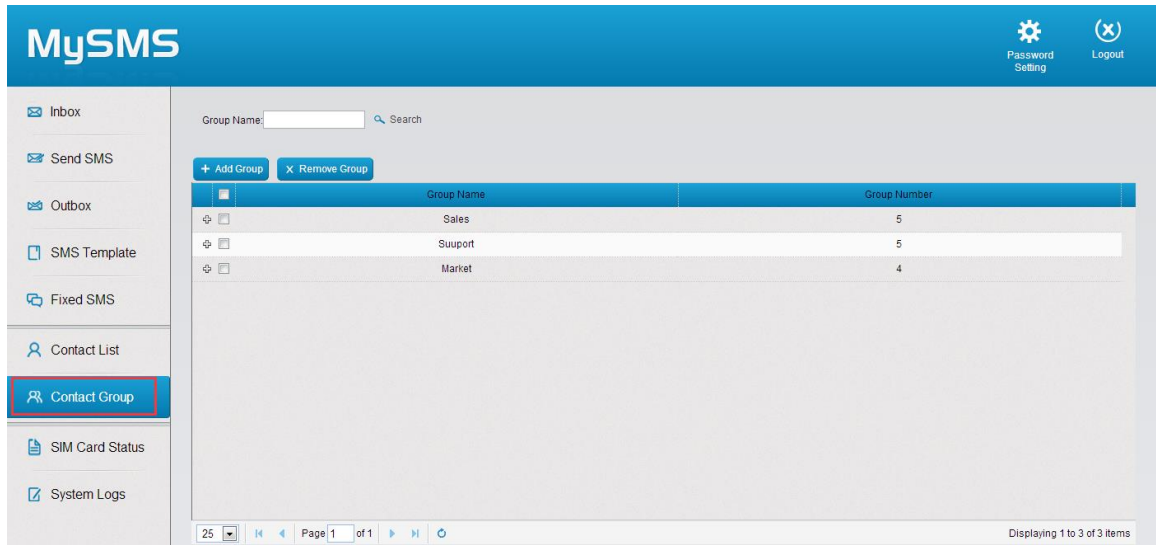


Figure 4-8 Contact Group

Add Group

1. Click **Add Group** button to create a new group.
2. Enter the group name and select the desired contacts to the right box.

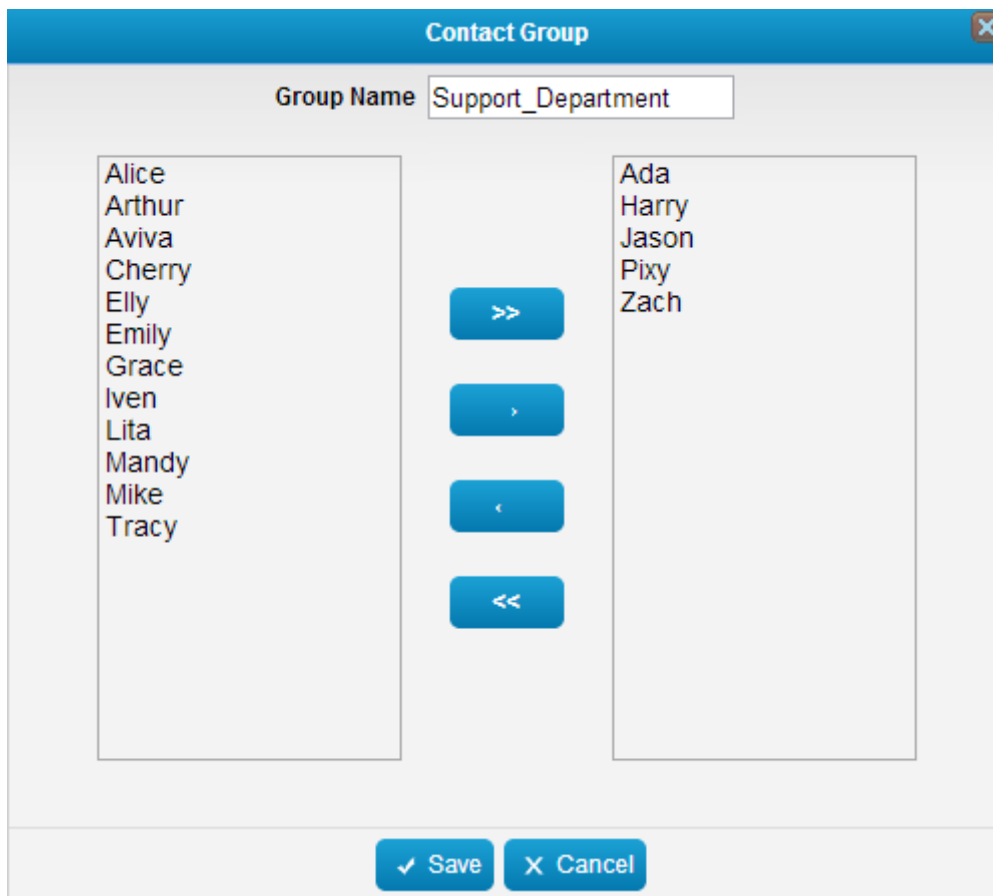


Figure 4-9 Add Contact Group

3. Click **Save** to save the contact group.

Remove Group

1. Select the desired group and click **Remove Group**.
2. Click **Ok** to remove the group.
3. Click **Cancel** to keep the group.

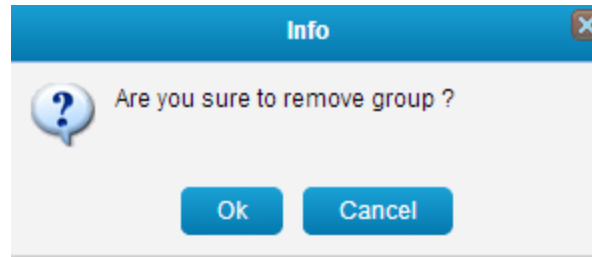


Figure 4-10 Remove Group

Search Group

The contact groups can be searched by "Group Name".

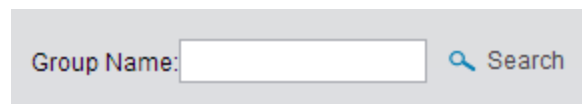


Figure 4-11 Search Group

4.4 Send SMS

4.4.1 Send Personalized SMS

In this section, we guide you how to send an SMS text message to the contacts by typing the message contents into MySMS.

Step1. Click the **Send SMS** option on the left-hand navigation bar, you will see the following screen.

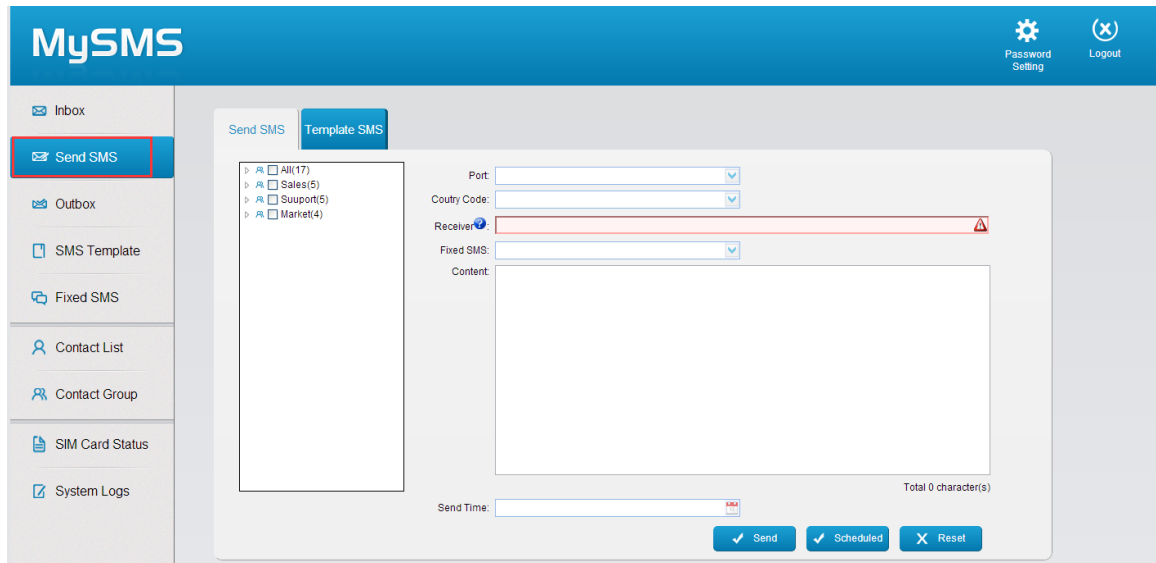


Figure 4-12 Send SMS

Step2. Select the available SIM card from the **Port** Field.

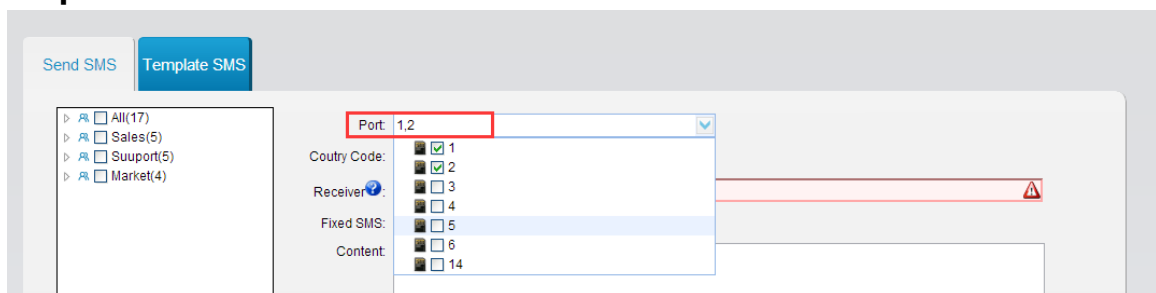


Figure 4-13 Select Port

Step3. Configure the **Country Code** according to your situation.

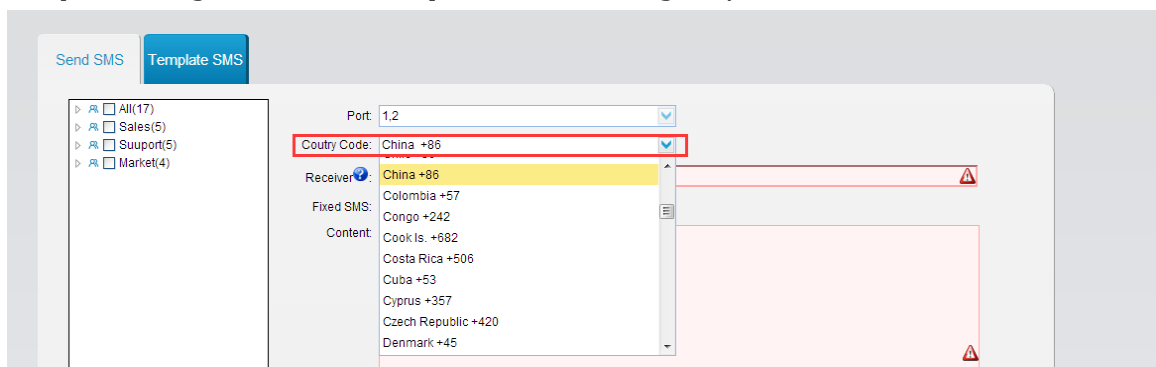
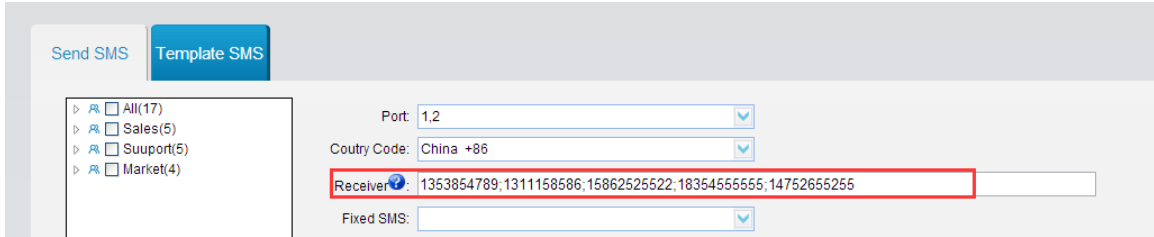


Figure 4-14 Country Code

Step4. Enter the intended receiver's mobile phone number in the **Receiver** field. You can enter multiple mobile phone numbers separated by semicolon.



Send SMS | Template SMS

Port: 1,2

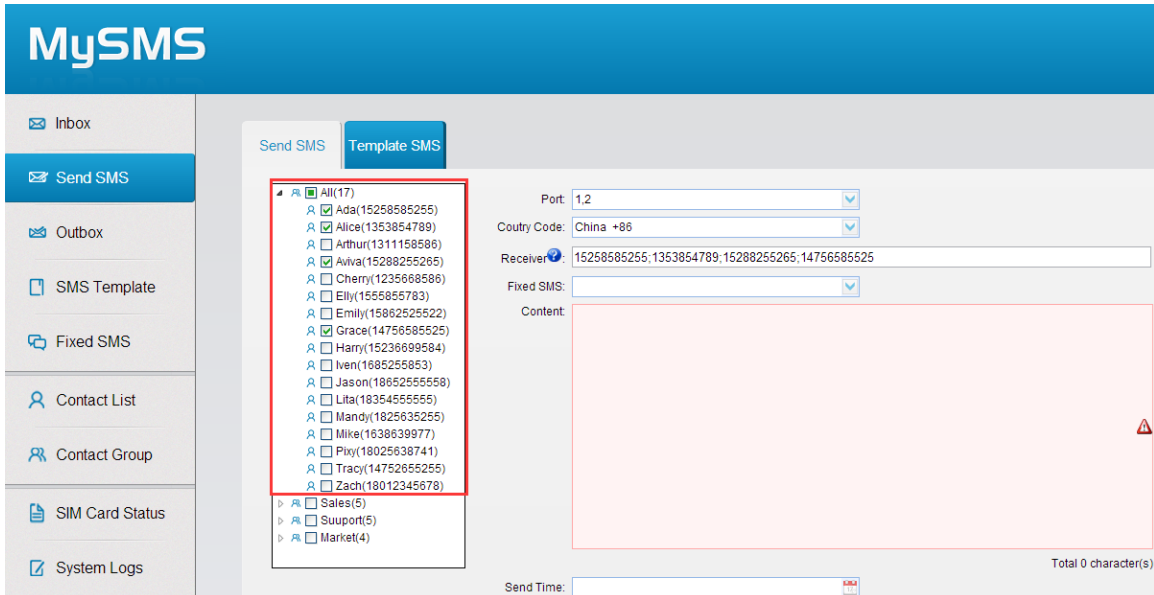
Country Code: China +86

Receiver: 1353854789;1311158586;15862525522;18354555555;14752655255

Fixed SMS:

Figure 4-15 Enter Phone Number

You can also pick the mobile numbers from the Contact list.



MySMS

Inbox

Send SMS

Outbox

SMS Template

Fixed SMS

Contact List

Contact Group

SIM Card Status

System Logs

Send SMS | Template SMS

Port: 1,2

Country Code: China +86

Receiver: 15258585255;1353854789;15288255265;14756585525

Fixed SMS:

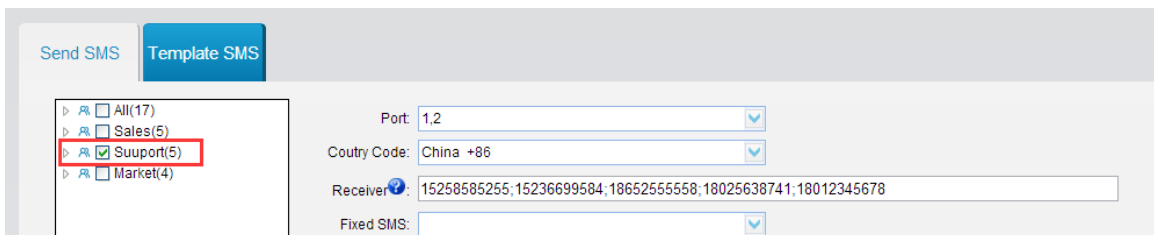
Content:

Send Time:

Total 0 character(s)

Figure 4-16 Select Contacts from Contact List

If you want to send the SMS message to a group, please select the desired group from the left box.



Send SMS | Template SMS

Port: 1,2

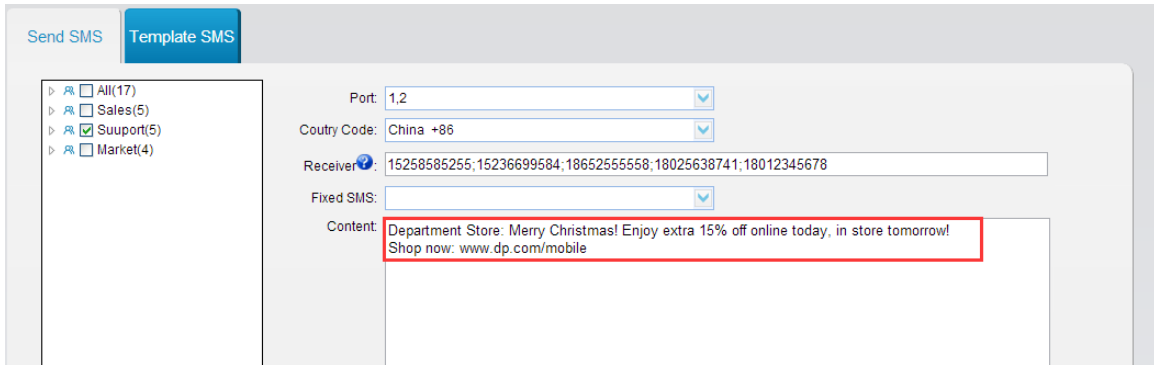
Country Code: China +86

Receiver: 15258585255;15236699584;18652555558;18025638741;18012345678

Fixed SMS:

Figure 4-17 Select Contacts from Contact Group

Step5. Type the contents in the **Content** Field.

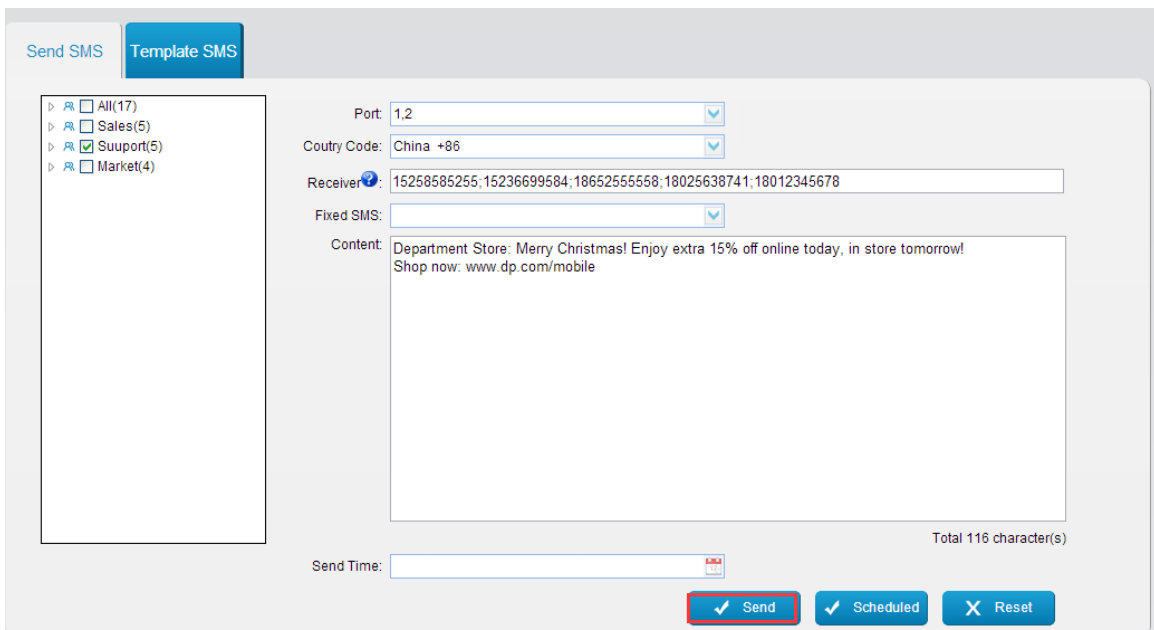


Send SMS | **Template SMS**

Port: 1,2
Country Code: China +86
Receiver: 15258585255;15236699584;18652555558;18025638741;18012345678
Fixed SMS:
Content: Department Store: Merry Christmas! Enjoy extra 15% off online today, in store tomorrow!
Shop now: www.dp.com/mobile

Figure 4-18 Type Contents

Step6. Click the **Send** button to send the composed message to the desired mobile numbers.



Send SMS | **Template SMS**

Port: 1,2
Country Code: China +86
Receiver: 15258585255;15236699584;18652555558;18025638741;18012345678
Fixed SMS:
Content: Department Store: Merry Christmas! Enjoy extra 15% off online today, in store tomorrow!
Shop now: www.dp.com/mobile
Total 116 character(s)
Send Time:
Send | Scheduled | Reset

Figure 4-19 Send SMS

4.4.2 Send Fixed SMS

A Fixed SMS is a ready-made SMS message that is used to make sending text messages that have the same content easier. Usually, we create fixed SMS messages that are used frequently.

Step1. Click **Add SMS**.

Step2. Enter the contents, and Click **Save**.

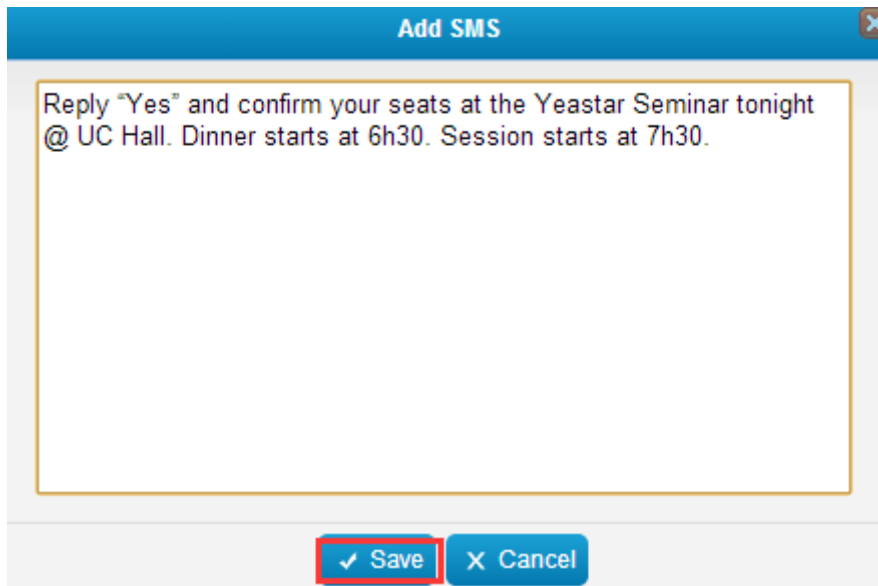


Figure 4-20 Add Fixed SMS

Step3. Click the **Send SMS** option on the left-hand navigation bar, you will see the following screen.

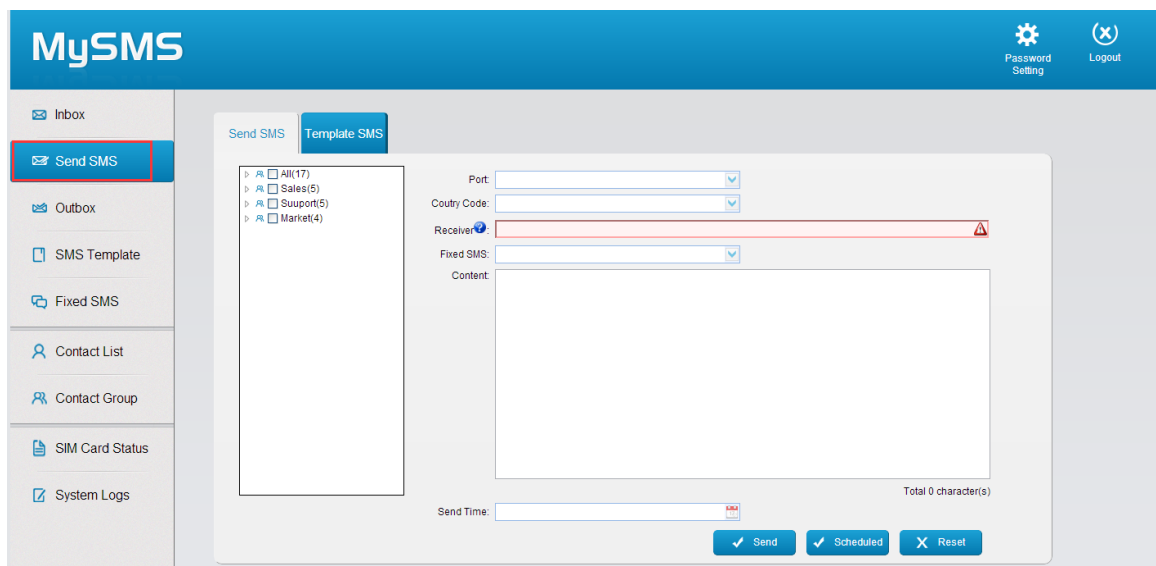


Figure 4-21 Send SMS

Step4. Select the available SIM card from the **Port** Field.

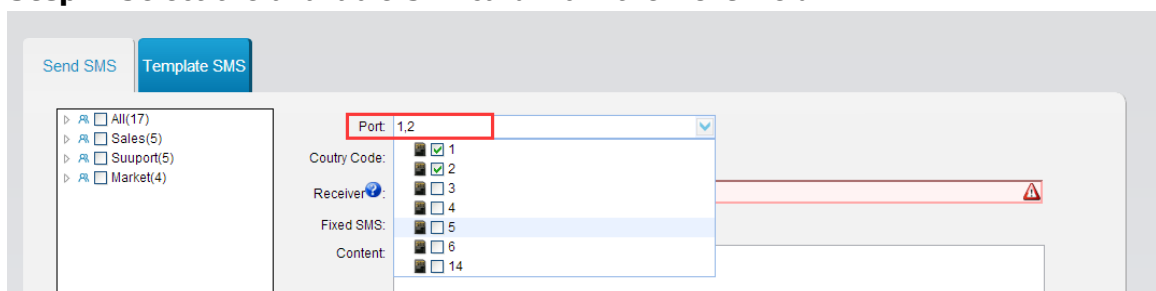


Figure 4-22 Select Port

Step5. Configure the **Country Code** according to your situation.

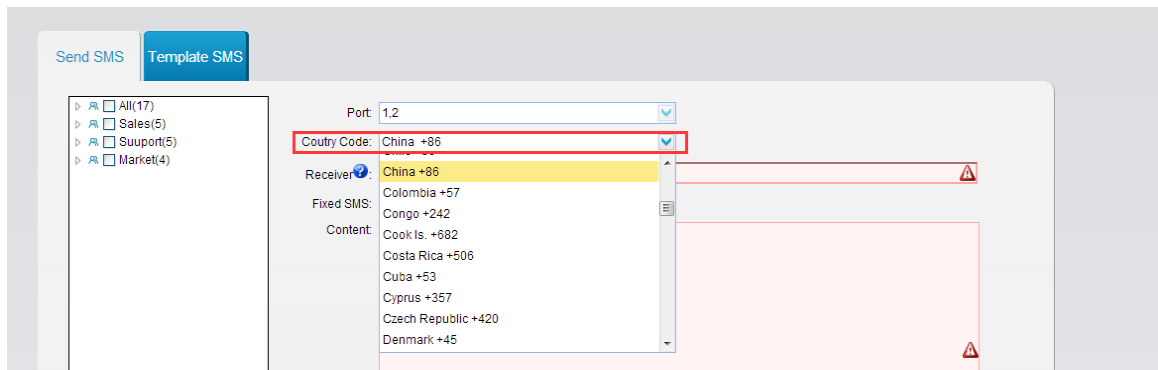


Figure 4-23 Country Code

Step6. Enter the intended receiver's mobile phone number in the **Receiver** field. You can enter multiple mobile phone numbers separated by semicolon.

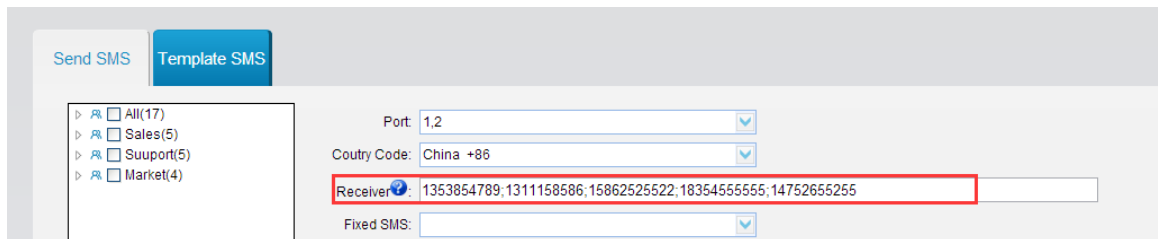


Figure 4-24 Enter Phone Number

You can also pick the mobile numbers from the Contact list.

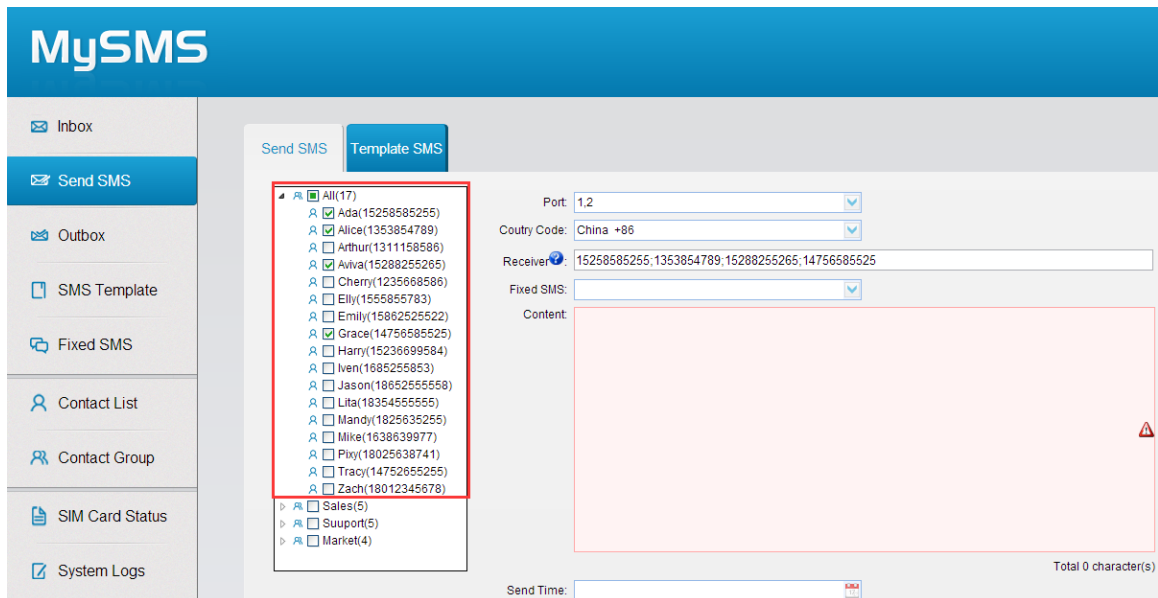
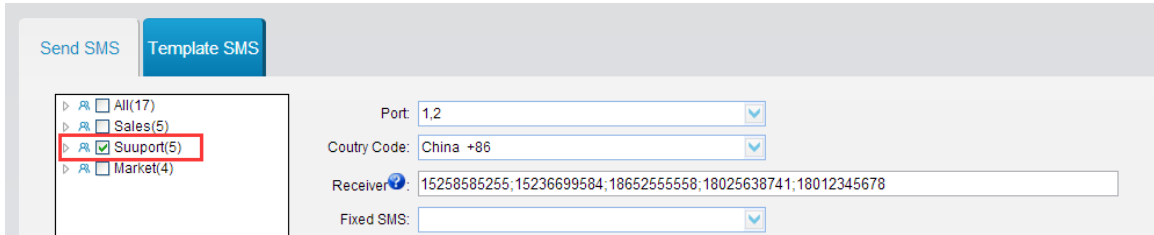


Figure 4-25 Select Contacts from Contact List

If you want to send the SMS message to a group, please select the desired group from the left box.



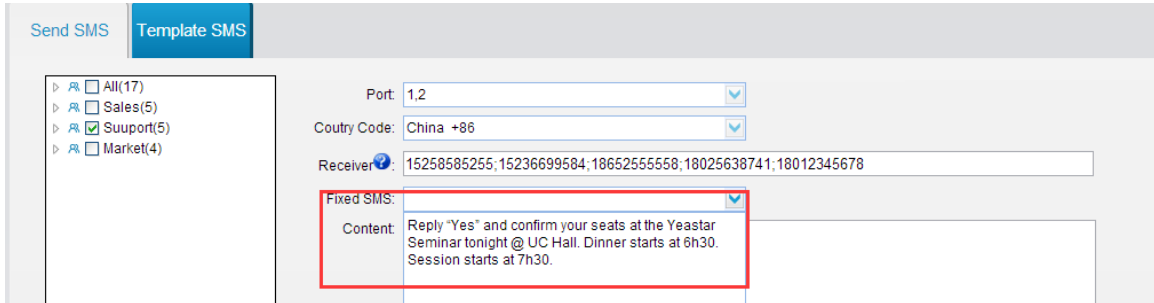
Send SMS | **Template SMS**

All(17)
 Sales(5)
 Suupport(5)
 Market(4)

Port: 1,2
 Coutry Code: China +86
 Receiver: 15258585255;15236699584;18652555558;18025638741;18012345678
 Fixed SMS:

Figure 4-26 Select Contacts from Contact Group

Step7. Select the Fixed SMS.



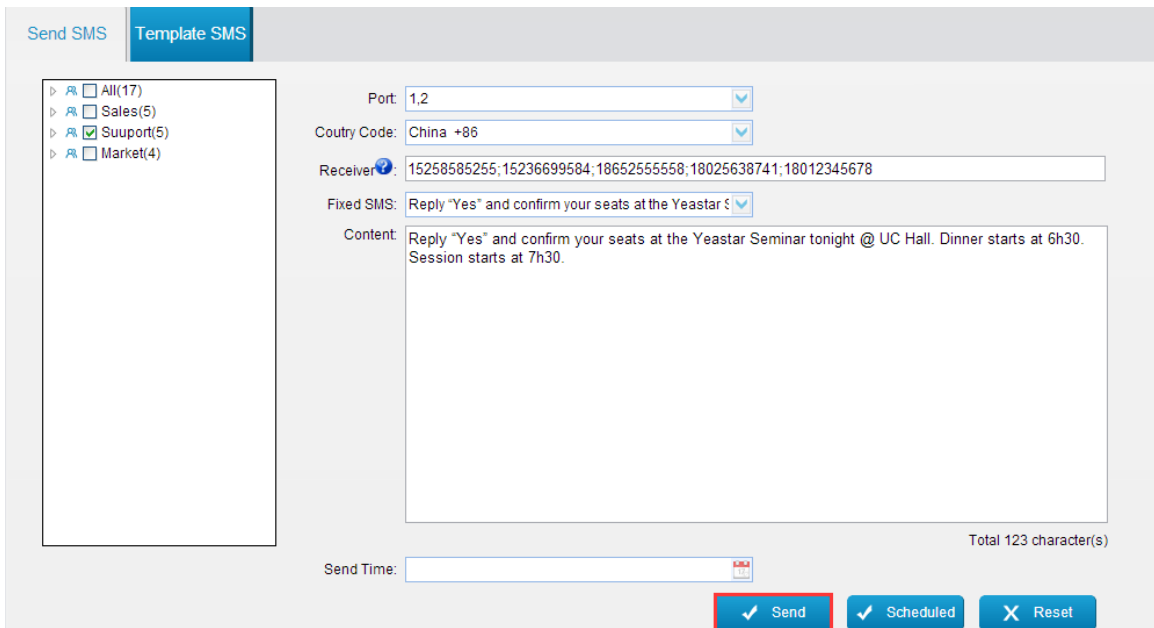
Send SMS | **Template SMS**

All(17)
 Sales(5)
 Suupport(5)
 Market(4)

Port: 1,2
 Coutry Code: China +86
 Receiver: 15258585255;15236699584;18652555558;18025638741;18012345678
 Fixed SMS: **Reply "Yes" and confirm your seats at the Yeastar Seminar tonight @ UC Hall. Dinner starts at 6h30. Session starts at 7h30.**
 Content: Reply "Yes" and confirm your seats at the Yeastar Seminar tonight @ UC Hall. Dinner starts at 6h30. Session starts at 7h30.

Figure 4-27 Select a Fixed SMS

Step6. Click the **Send** button to send the fixed SMS message to the desired mobile numbers.



Send SMS | **Template SMS**

All(17)
 Sales(5)
 Suupport(5)
 Market(4)

Port: 1,2
 Coutry Code: China +86
 Receiver: 15258585255;15236699584;18652555558;18025638741;18012345678
 Fixed SMS: Reply "Yes" and confirm your seats at the Yeastar
 Content: Reply "Yes" and confirm your seats at the Yeastar Seminar tonight @ UC Hall. Dinner starts at 6h30. Session starts at 7h30.

Send Time:

Total 123 character(s)

Figure 4-28 Send Fixed SMS

4.4.3 Send Scheduled SMS

Step1. Click the **Send SMS** option on the left-hand navigation bar, you will see the following screen.

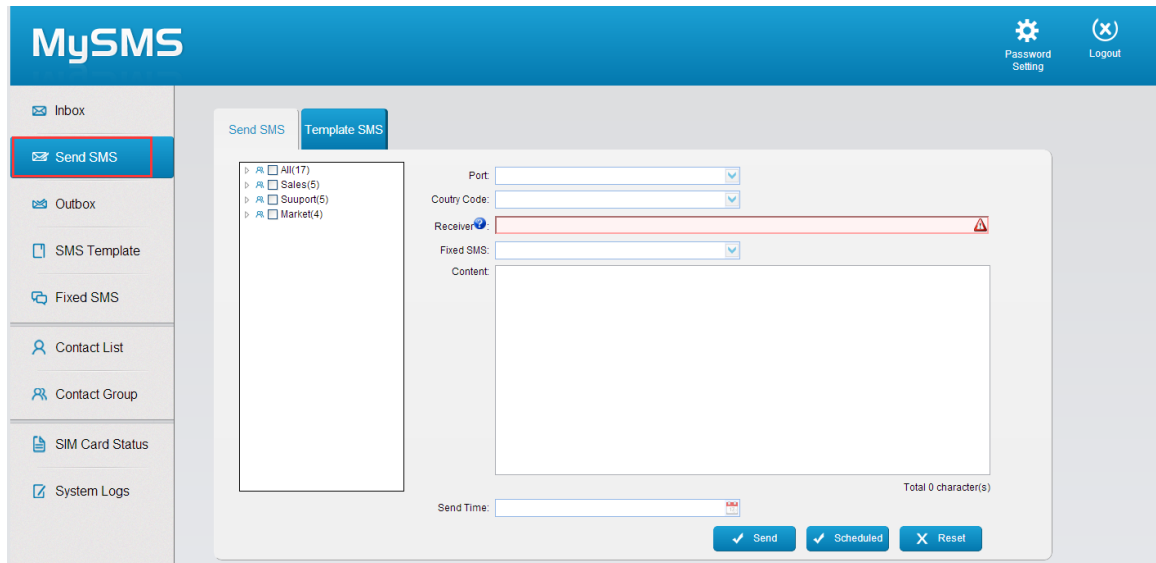


Figure 4-29 Send SMS

Step2. Select the available SIM card from the **Port** Field.

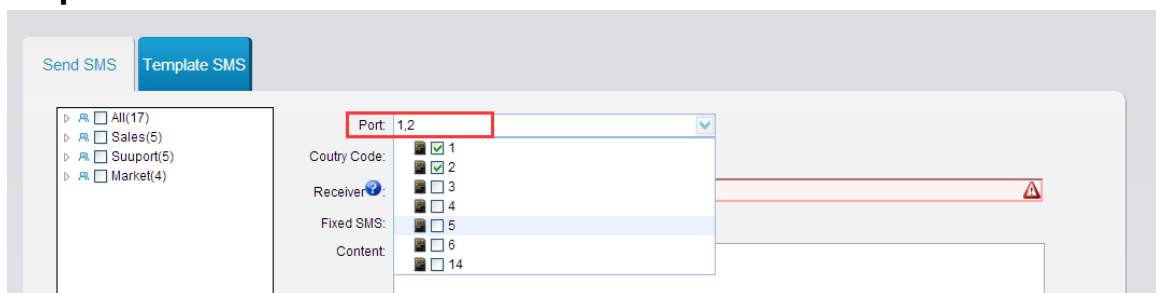


Figure 4-30 Select Port

Step3. Configure the **Country Code** according to your situation.

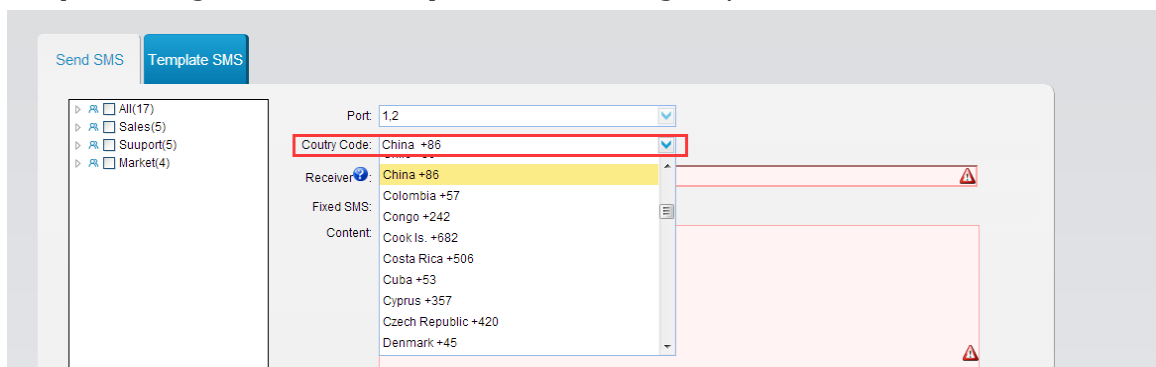
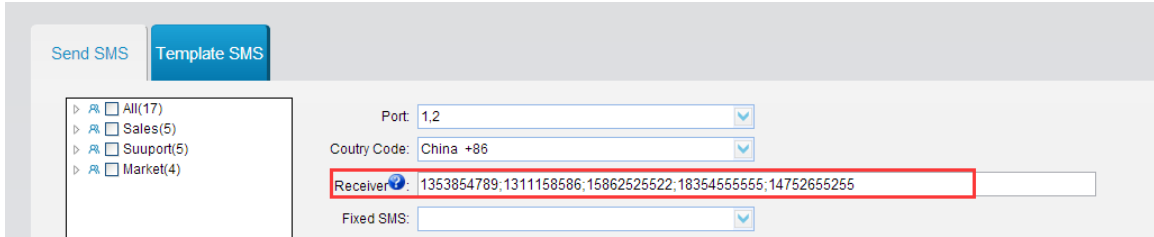


Figure 4-31 Country Code

Step4. Enter the intended receiver's mobile phone number in the **Receiver** field. You can enter multiple mobile phone numbers separated by semicolon.



Send SMS **Template SMS**

All(17)
 Sales(5)
 Suuport(5)
 Market(4)

Port: 1,2

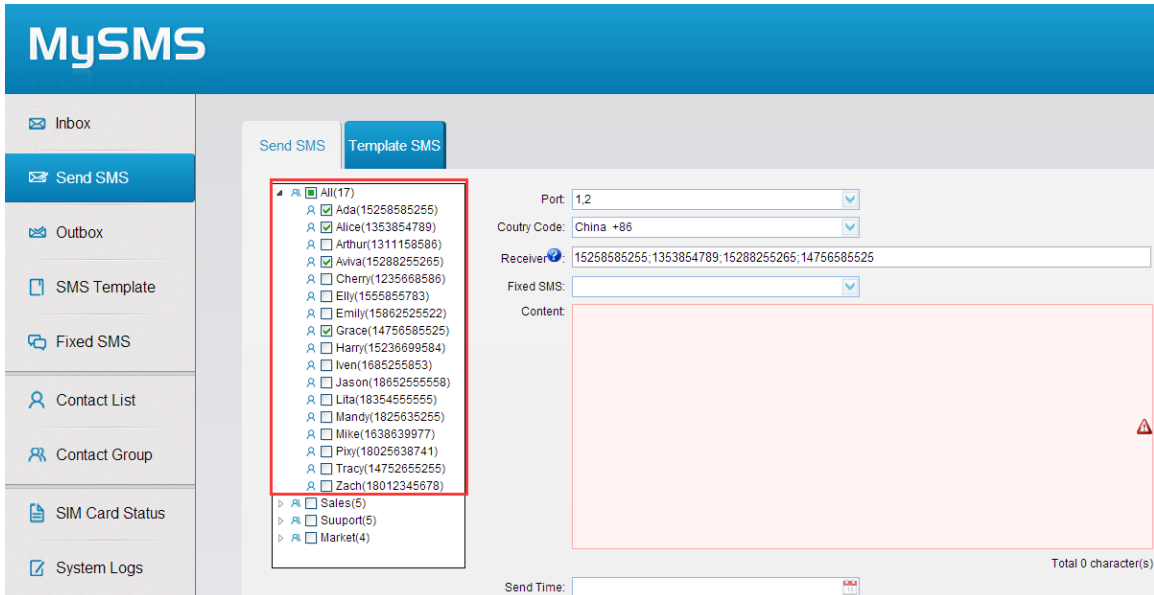
Country Code: China +86

Receiver: 1353854789;1311158586;15862525522;18354555555;14752655255

Fixed SMS:

Figure 4-32 Enter Phone Numbers

You can also pick the mobile numbers from the Contact list.



MySMS

Inbox

Send SMS

Outbox

SMS Template

Fixed SMS

Contact List

Contact Group

SIM Card Status

System Logs

Send SMS **Template SMS**

All(17)
 Ada(15258585255)
 Alice(1353854789)
 Arthur(1311158586)
 Aivva(15288252525)
 Cherry(1235668586)
 Emily(1555855783)
 Emily(15862525522)
 Grace(14756585525)
 Harry(15236699584)
 Iven(1885255853)
 Jason(18652555558)
 Lita(18354555555)
 Mandy(1825635255)
 Mike(1838639977)
 Pixy(18025638741)
 Tracy(14752655255)
 Zach(18012345678)

Port: 1,2

Country Code: China +86

Receiver: 15258585255;1353854789;15288255265;14756585525

Fixed SMS:

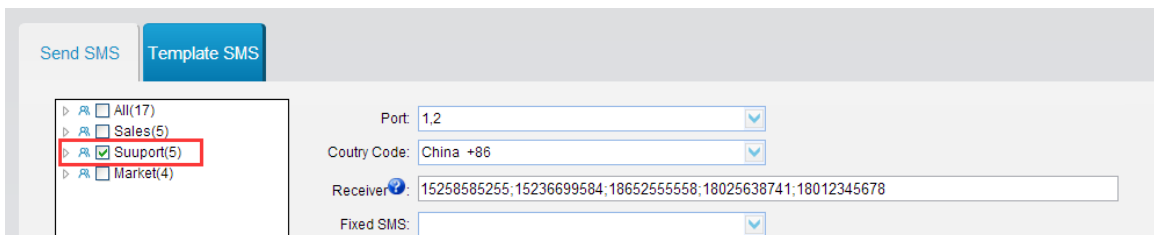
Content:

Send Time:

Total 0 character(s)

Figure 4-33 Select Contacts from Contact List

If you want to send the SMS message to a group, please select the desired group from the left box.



Send SMS **Template SMS**

All(17)
 Sales(5)
 Suuport(5)
 Market(4)

Port: 1,2

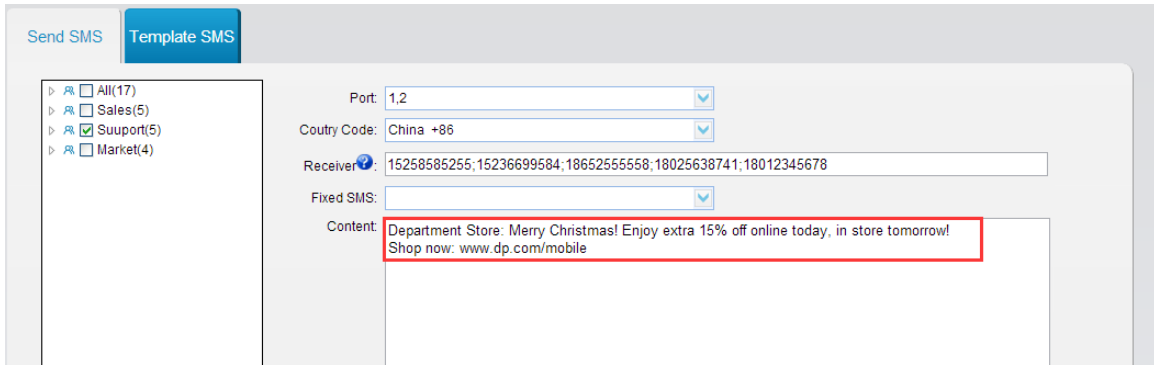
Country Code: China +86

Receiver: 15258585255;15236699584;18652555558;18025638741;18012345678

Fixed SMS:

Figure 4-34 Select Contacts from Contact Group

Step5. Type the contents in the **Content** Field or select a Fixed SMS message.



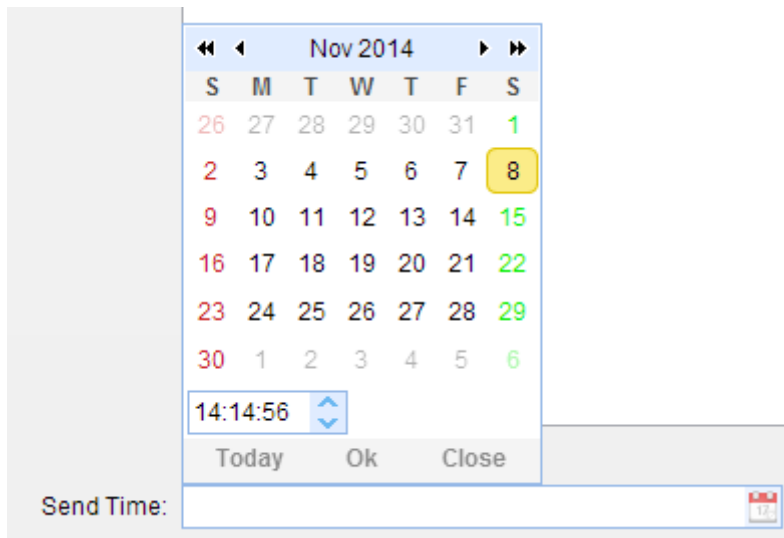
Send SMS | **Template SMS**

All(17)
 Sales(5)
 Suuport(5)
 Market(4)

Port: 1,2
 Coutry Code: China +86
 Receiver: 15258585255;15236699584;18652555558;18025638741;18012345678
 Fixed SMS:
 Content: Department Store: Merry Christmas! Enjoy extra 15% off online today, in store tomorrow! Shop now: www.dp.com/mobile

Figure 4-35 Edit Content

Step6. Select the date and time for the scheduled message to be delivered. Use the calendar to specify the time and date that you want the message to be sent, and then click **OK**.



<< < Nov 2014 > >>
 S M T W T F S
 26 27 28 29 30 31 1
 2 3 4 5 6 7 8
 9 10 11 12 13 14 15
 16 17 18 19 20 21 22
 23 24 25 26 27 28 29
 30 1 2 3 4 5 6
 14:14:56
 Today Ok Close

Send Time:

Figure 4-36 Select the Date and Time

Step7. Click the **Scheduled** button, the system will prompt you “Scheduled Successfully”.

4.4.4 Send Template SMS

MySMS allows you to send personalized SMS messages using the data directly from the Microsoft Excel file. It offers a great amount of ease and convenience. You can send bulk, but personalized SMS messages.

Step1. Add an SMS template. Click the **SMS Template** option on the left-hand navigation then click the button **Add Template**.

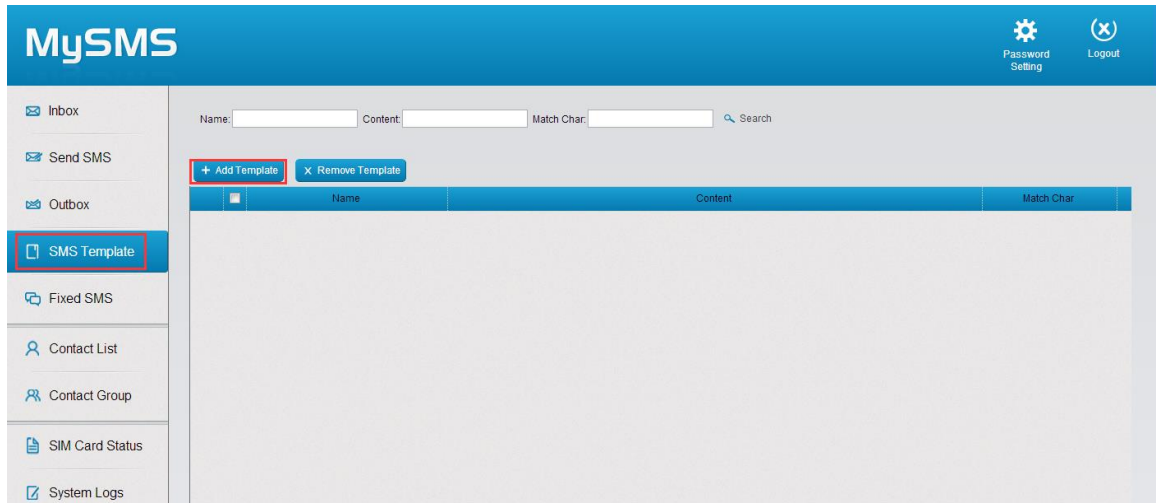


Figure 4-37 Add SMS Template

Step2. Fill in the content and match characters.

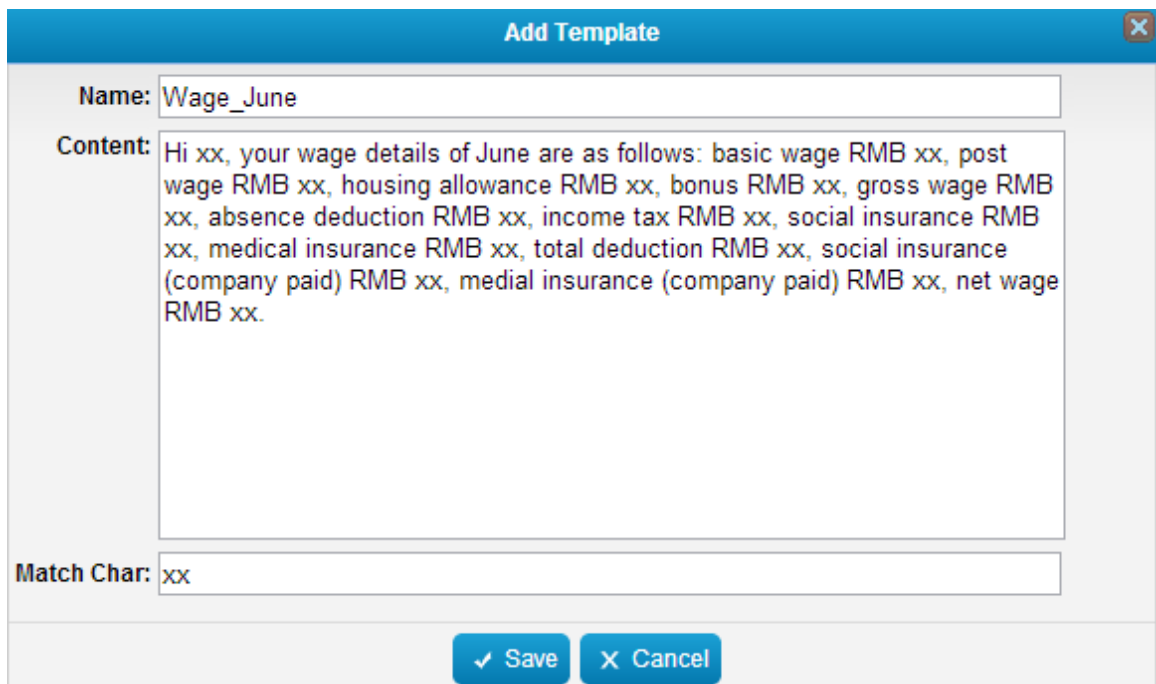


Figure 4-38 Edit SMS Template

Step3. Go to **Send SMS** page, and choose **Template SMS**.

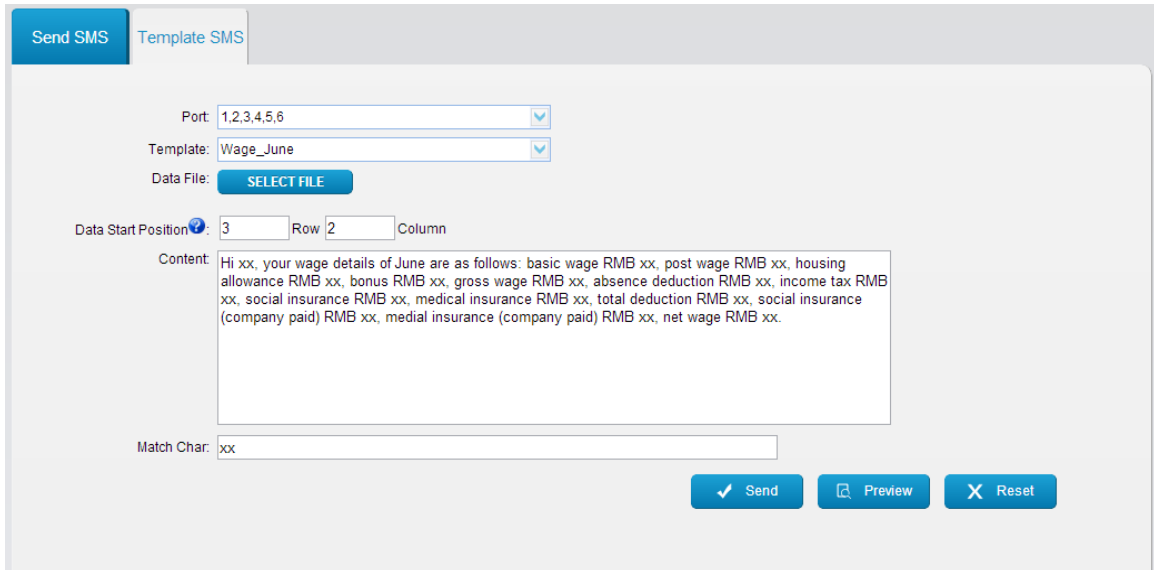


Figure 4-39 Send Template SMS

Step4. Select the port and template.

Step5. Import the excel data file and define where does the data start.

Step6. Fill in the match characters.

For example, the data in the excel file is showing as below.

Data starts from Row 3 Column 2, so you should set the **Date Start Position** on MySMS: 3 Row 2 Column.

	A	B	C	D	E	F	G	H	I
1				Gross Wage					
2	No.	Receiver	Name	Basic Wage	Post Wage	Housing Allowance	Bonus	Gross Wage	
3	1	18050089223	Nancy	2000	3900	400	0	6300	
4	2	18050089224	Abby	3000	3900	400	0	7300	
5	3	18050089225	Amanda	2000	3900	400	0	6300	
6	4	18050089226	Zoe	3000	3900	400	0	7300	
7	5	18050089227	John	2000	3900	400	0	6300	
8	6	18050089228	Lucas	3000	3900	400	0	7300	
9	7	18050089229	Jack	2000	3900	400	0	6300	
10	8	18050089230	Linda	3000	3900	400	0	7300	

Figure 4-40 Excel Data

Step7. Before sending the SMS messages, you can click **Preview** to check if the messages are correct or not.

4.6 Inbox

You can view all the replies to the message that have been sent in the Inbox.

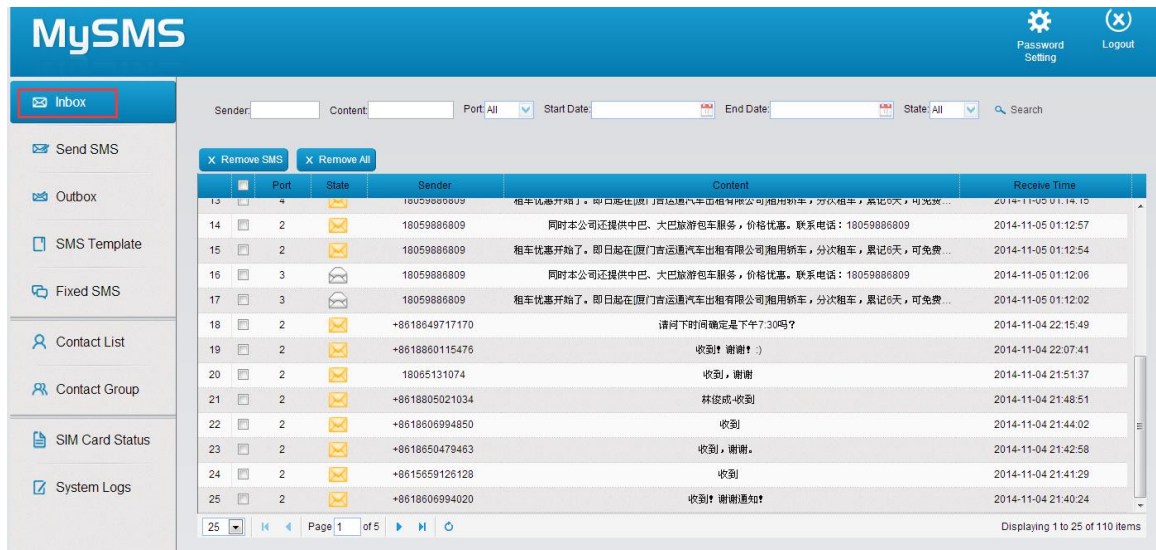


Figure 4-43 Inbox

Click a specific SMS message, you can reply the message. After typing the contents, click **Reply** button to reply.

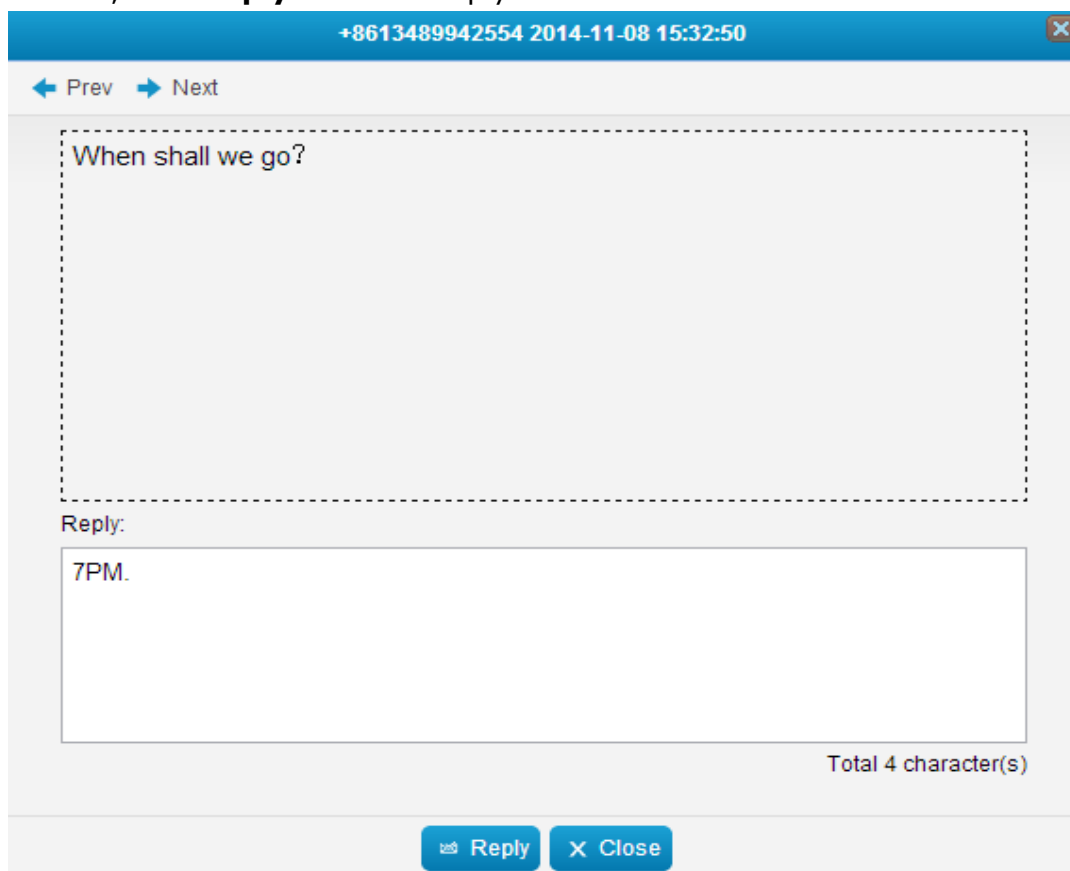


Figure 4-44 Reply a Message

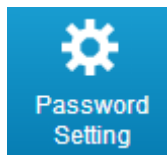
4.7 System Logs

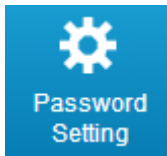
The system logs can be viewed and searched by the user on this page.

Log Type	Start Date	End Date	IP Address	Search
1	Send SMS	2014-11-08 15:30:58	192.168.3.99	Isf
2	Send SMS	2014-11-08 15:28:05	192.168.3.99	Isf
3	Login	2014-11-08 15:26:18	192.168.3.99	Isf
4	Send SMS	2014-11-08 13:50:17	192.168.3.99	Isf
5	Send SMS	2014-11-08 13:50:12	192.168.3.99	Isf
6	Send SMS	2014-11-08 13:50:07	192.168.3.99	Isf
7	Send SMS	2014-11-08 13:50:02	192.168.3.99	Isf
8	Send SMS	2014-11-08 13:49:56	192.168.3.99	Isf
9	Login	2014-11-08 13:30:40	192.168.3.99	Isf
10	Login	2014-11-08 13:29:38	192.168.3.29	Isf
11	Login	2014-11-08 12:49:04	192.168.3.99	Isf
12	Add Group	2014-11-08 11:54:03	192.168.3.99	Isf
13	Add Group	2014-11-08 11:53:47	192.168.3.99	Isf

Figure 4-45 System Logs

4.8 Password Settings



Click  to change the password of user account.

Enter the old password and set a new password, click **Save**, then log in admin account using new password.

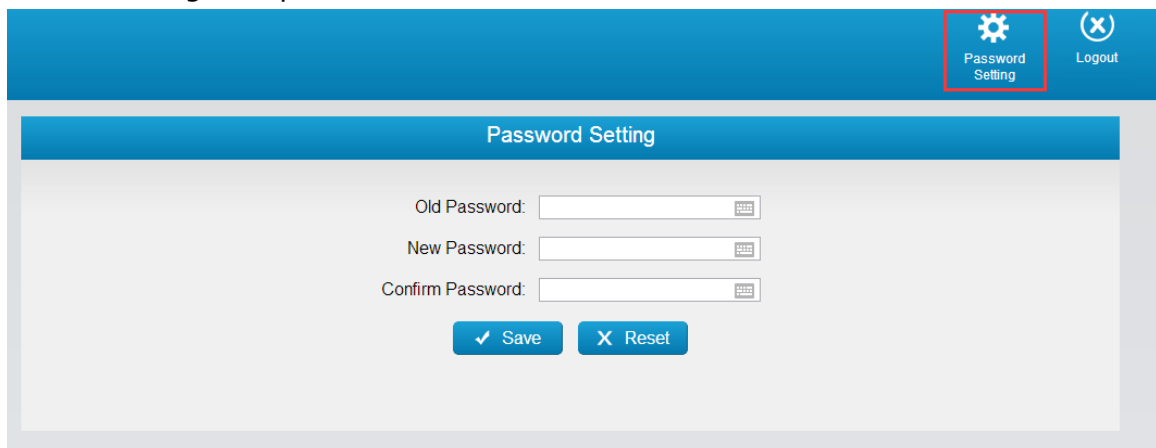


Figure 4-46 Password Settings

[End]